



Queensland

Police Powers and Responsibilities (Commonwealth Games) Amendment Regulation 2017

Subordinate Legislation 2017 No. 200

made under the

Police Powers and Responsibilities Act 2000

Contents

| | | Page |
|---|--|------|
| 1 | Short title | 2 |
| 2 | Commencement | 2 |
| 3 | Regulation amended | 2 |
| 4 | Insertion of new pt 4C | 2 |
| | Part 4C Additional powers for Commonwealth Games | |
| | 20G Protective security zones—Act, s 619G | 2 |
| | 20H References to period for protective security zone ... | 3 |
| | 20I Expiry of part and schs 1A and 1B | 3 |
| 5 | Insertion of new schs 1A and 1B | 3 |
| | Schedule 1A Protective security zones | 3 |
| | Schedule 1B Maps of protective security zones | 6 |
| 6 | Amendment of sch 10 (Dictionary) | 143 |

[s 1]

1 Short title

This regulation may be cited as the *Police Powers and Responsibilities (Commonwealth Games) Amendment Regulation 2017*.

2 Commencement

Section 6(1) commences on 23 April 2018.

3 Regulation amended

This regulation amends the *Police Powers and Responsibilities Regulation 2012*.

4 Insertion of new pt 4C

After part 4B—

insert—

**Part 4C Additional powers for
Commonwealth Games**

20G Protective security zones—Act, s 619G

- (1) For section 619G(1) of the Act, each of the areas stated in schedule 1A, column 1 is a protective security zone for the period stated opposite the protective security zone in column 2 of the schedule.
- (2) A map of each protective security zone is shown in schedule 1B.

Notes—

- 1 A map showing the exact location of the boundary of each protective security zone is able to be accessed, free of charge, on the department's website or another website nominated by the commissioner.

- 2 See section 619I of the Act for provisions that apply if a Games major event area and a protective security zone overlap.
- 3 The *Major Events (Gold Coast Commonwealth Games) Regulation 2017* provides for the major event areas and the periods for which particular provisions of the *Major Events Act 2014* apply in each major event area.

20H References to period for protective security zone

- (1) The period for which a protective security zone is in effect that starts on a particular day starts at the beginning of that day.
- (2) The period for which a protective security zone is in effect that finishes on a particular day finishes at the end of that day.

20I Expiry of part and schs 1A and 1B

This part and schedules 1A and 1B expire on 22 April 2018.

5 Insertion of new schs 1A and 1B

After schedule 1—

insert—

Schedule 1A Protective security zones

section 20G(1)

Part 1

Gold Coast venues

[s 5]

| Column 1 | Column 2 |
|-------------------------------------|--------------------------------|
| Protective security zone | Period |
| Broadbeach Precinct | 1 April 2018 to 15 April 2018 |
| Carrara Sports Precinct | 1 April 2018 to 15 April 2018 |
| Commonwealth Games Village Precinct | 10 March 2018 to 18 April 2018 |
| Coolangatta Beachfront | 6 April 2018 to 12 April 2018 |
| Coomera Indoor Sports Centre | 5 April 2018 to 15 April 2018 |
| Currumbin Beachfront | 8 April 2018 to 15 April 2018 |
| Cycling Road Race Course | 14 April 2018 |
| Cycling Time Trial Course | 10 April 2018 |
| Games Family Hotel | 21 March 2018 to 16 April 2018 |
| Marathon Course | 15 April 2018 |
| Nerang Mountain Biking | 12 April 2018 |
| Oxenford Studios | 5 April 2018 to 15 April 2018 |
| Robina Stadium | 4 April 2018 to 15 April 2018 |
| Southport Broadwater Precinct | 4 April 2018 to 15 April 2018 |
| Surfers Paradise Festival Live Site | 4 April 2018 to 15 April 2018 |
| Triathlon Field of Play | 5 April 2018 to 7 April 2018 |

Part 2

Brisbane venues

| Column 1 | Column 2 |
|---------------------------------|-------------------------------|
| Protective security zone | Period |
| Brisbane Venues | 5 April 2018 to 14 April 2018 |
| South Bank Games Festival | 4 April 2018 to 15 April 2018 |

Part 3 Townsville venues

| Column 1 | Column 2 |
|--|--------------------------------|
| Protective security zone | Period |
| Townsville Games Festival | 4 April 2018 to 15 April 2018 |
| Townsville Venues CBD | 31 March 2018 to 11 April 2018 |
| Townsville Venues Entertainment Centre | 31 March 2018 to 11 April 2018 |

Part 4 Cairns venues

| Column 1 | Column 2 |
|---------------------------------|--------------------------------|
| Protective security zone | Period |
| Cairns Games Festival | 4 April 2018 to 15 April 2018 |
| Cairns Venues | 31 March 2018 to 11 April 2018 |

Part 5 Heavy Rail and Light Rail Networks

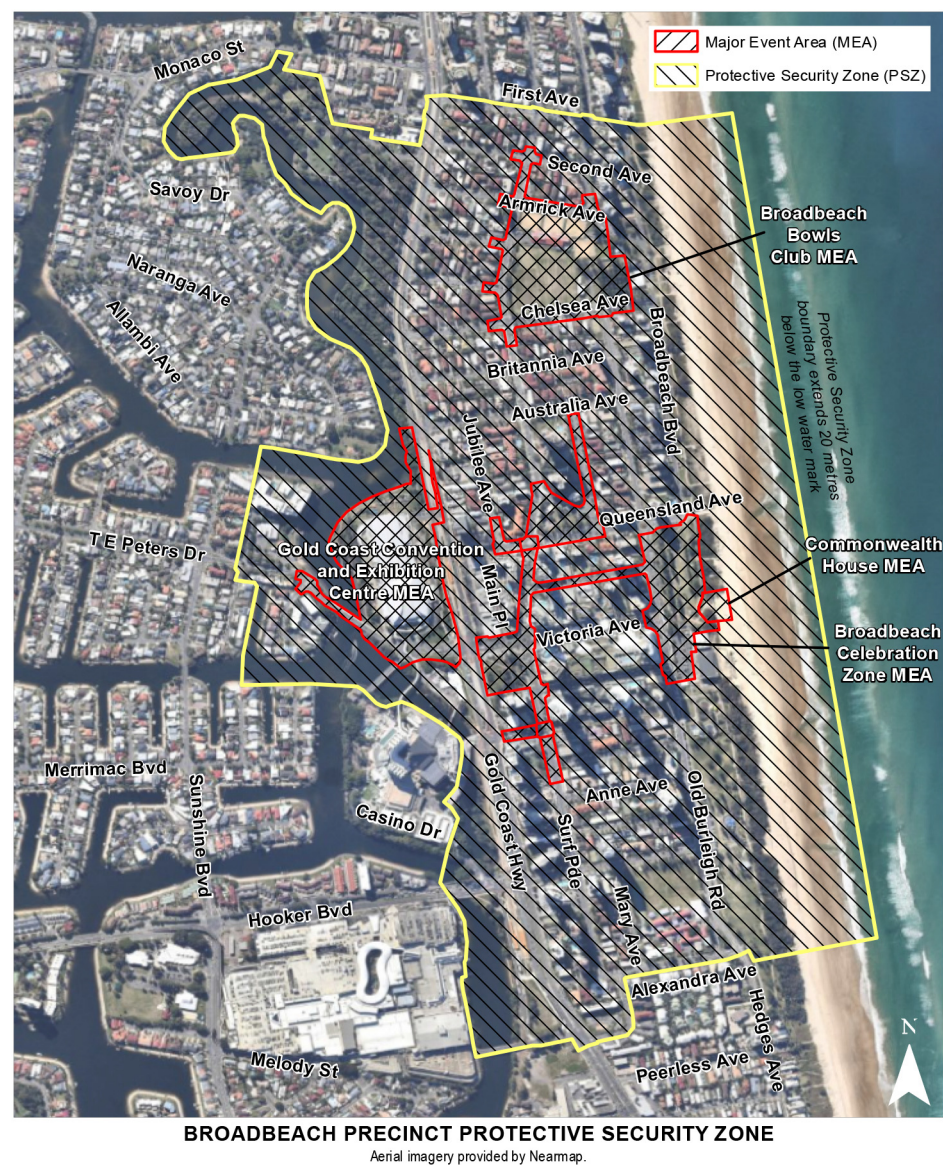
[s 5]

| Column 1 | Column 2 |
|--|-------------------------------|
| Protective security zone | Period |
| Gold Coast Train Line—Heavy Rail Network | 4 April 2018 to 15 April 2018 |
| Gold Coast Light Rail Network (G:Link) | 4 April 2018 to 15 April 2018 |
| Helensvale Transport Hub | 4 April 2018 to 15 April 2018 |

Schedule 1B Maps of protective security zones

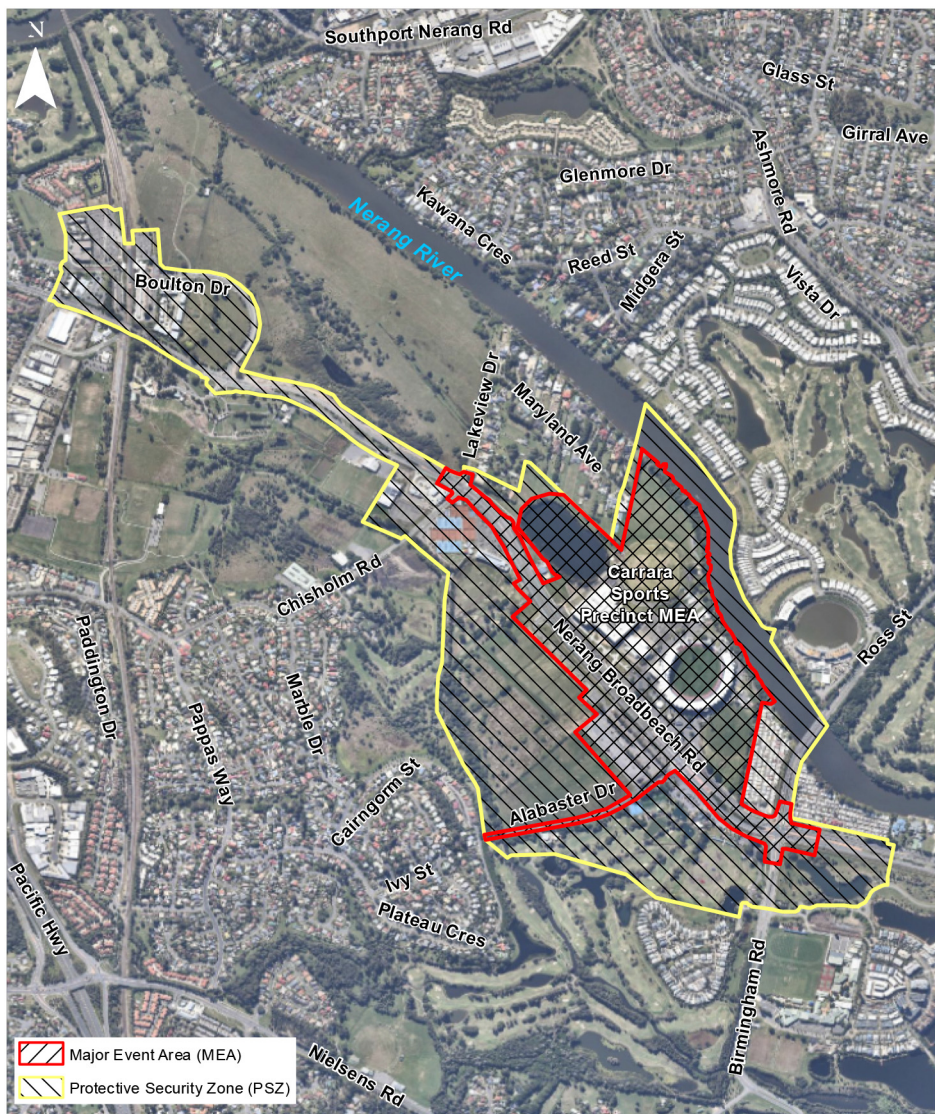
section 20G(2)

Part 1 Broadbeach Precinct



[s 5]

Part 2 Carrara Sports Precinct



CARRARA SPORTS PRECINCT PROTECTIVE SECURITY ZONE

Aerial imagery provided by Neamap.

Part 3

Commonwealth Games
Village Precinct



COMMONWEALTH GAMES VILLAGE PRECINCT PROTECTIVE SECURITY ZONE

Aerial imagery provided by Nearmap.

[s 5]

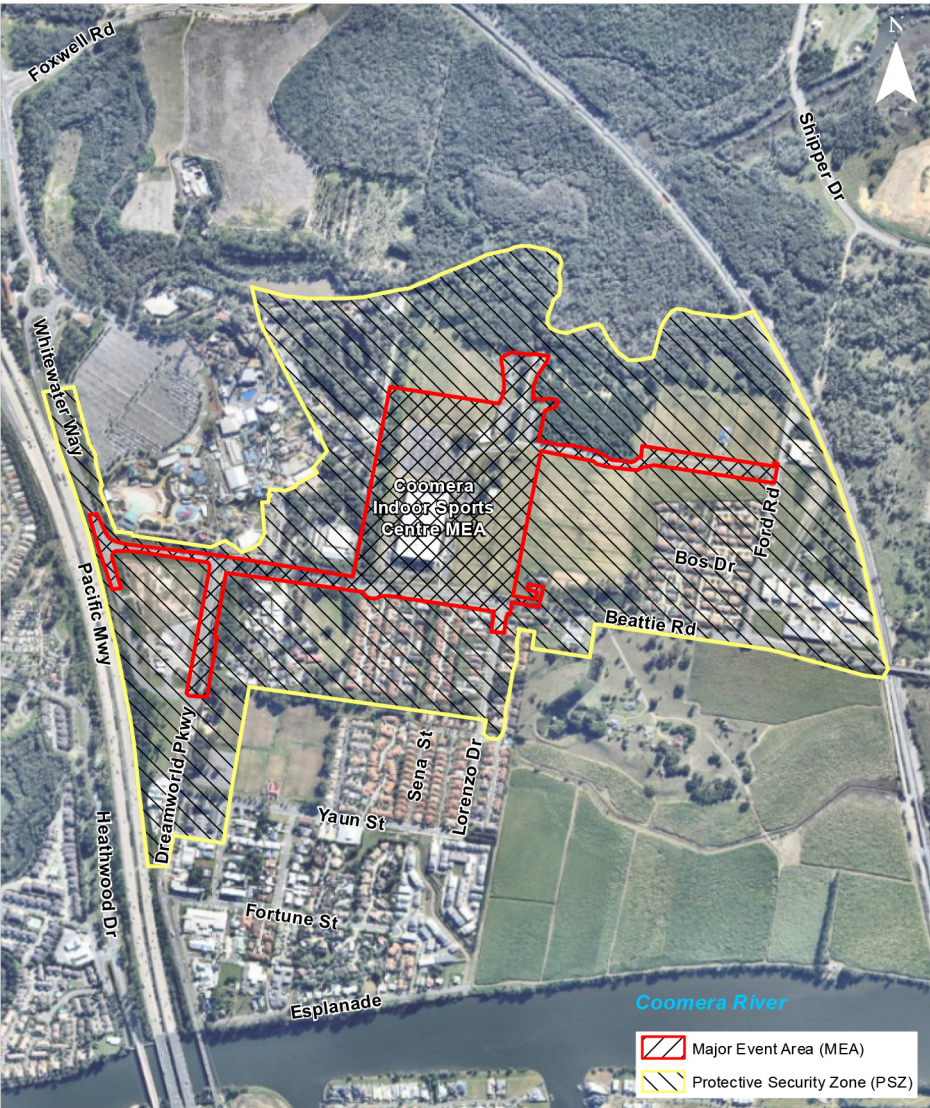
Part 4

Coolangatta Beachfront



Part 5

Coomera Indoor Sports Centre



[s 5]

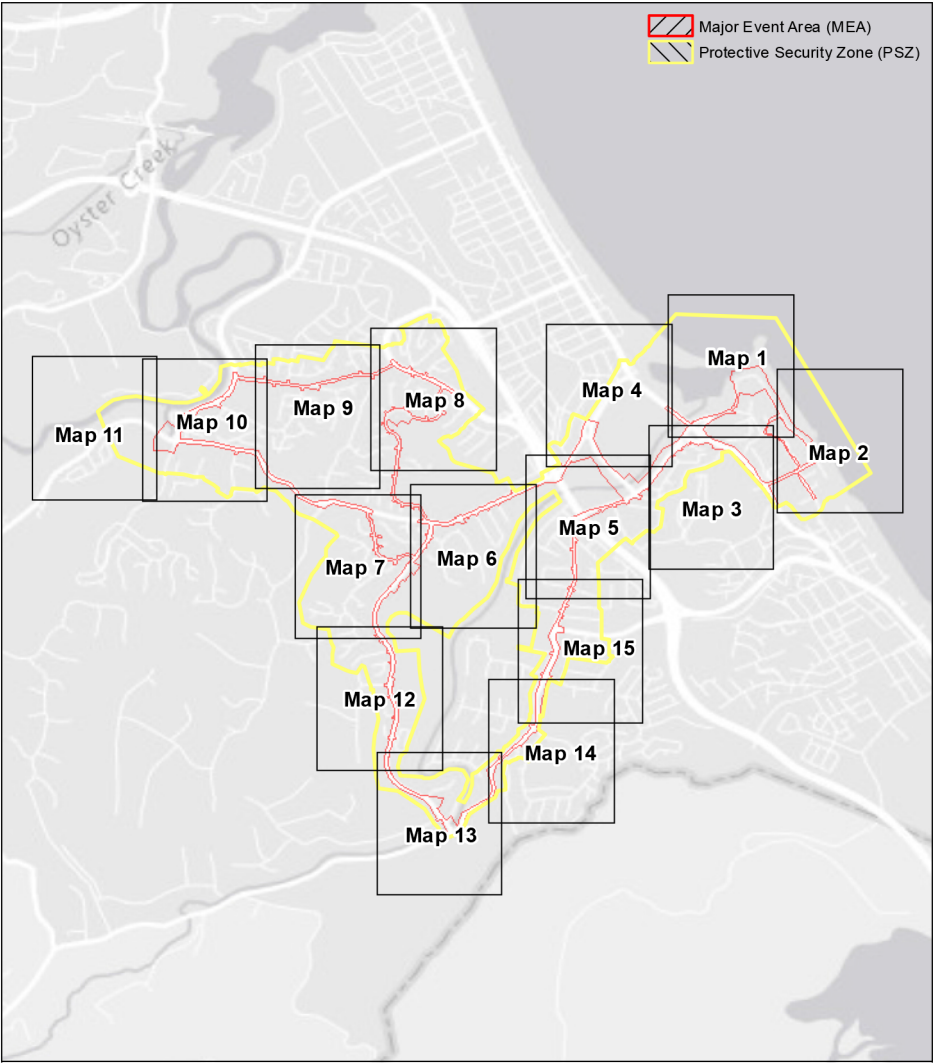
Part 6

Currumbin Beachfront



Part 7

Cycling Road Race Course



CYCLING ROAD RACE
PROTECTIVE SECURITY ZONE
INDEX TO MAPS

[s 5]



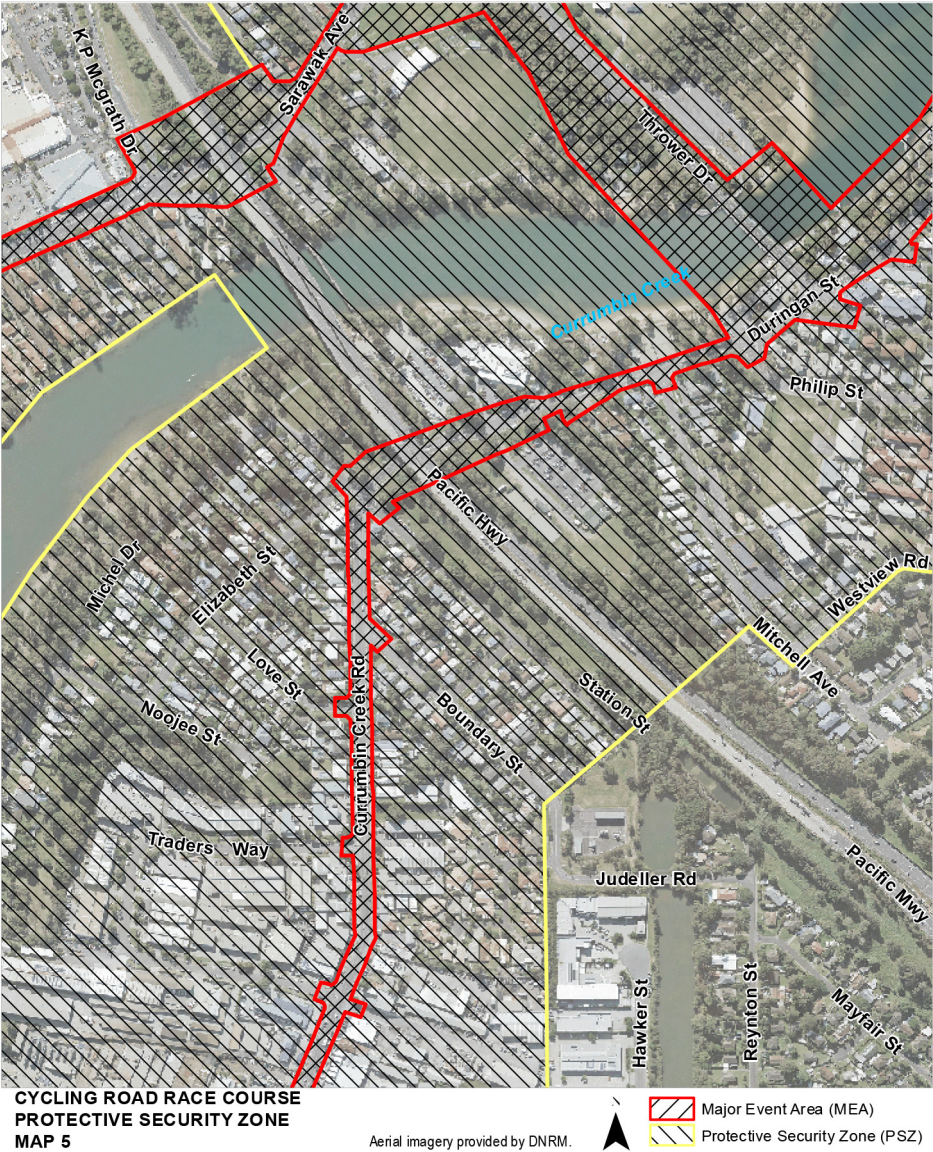


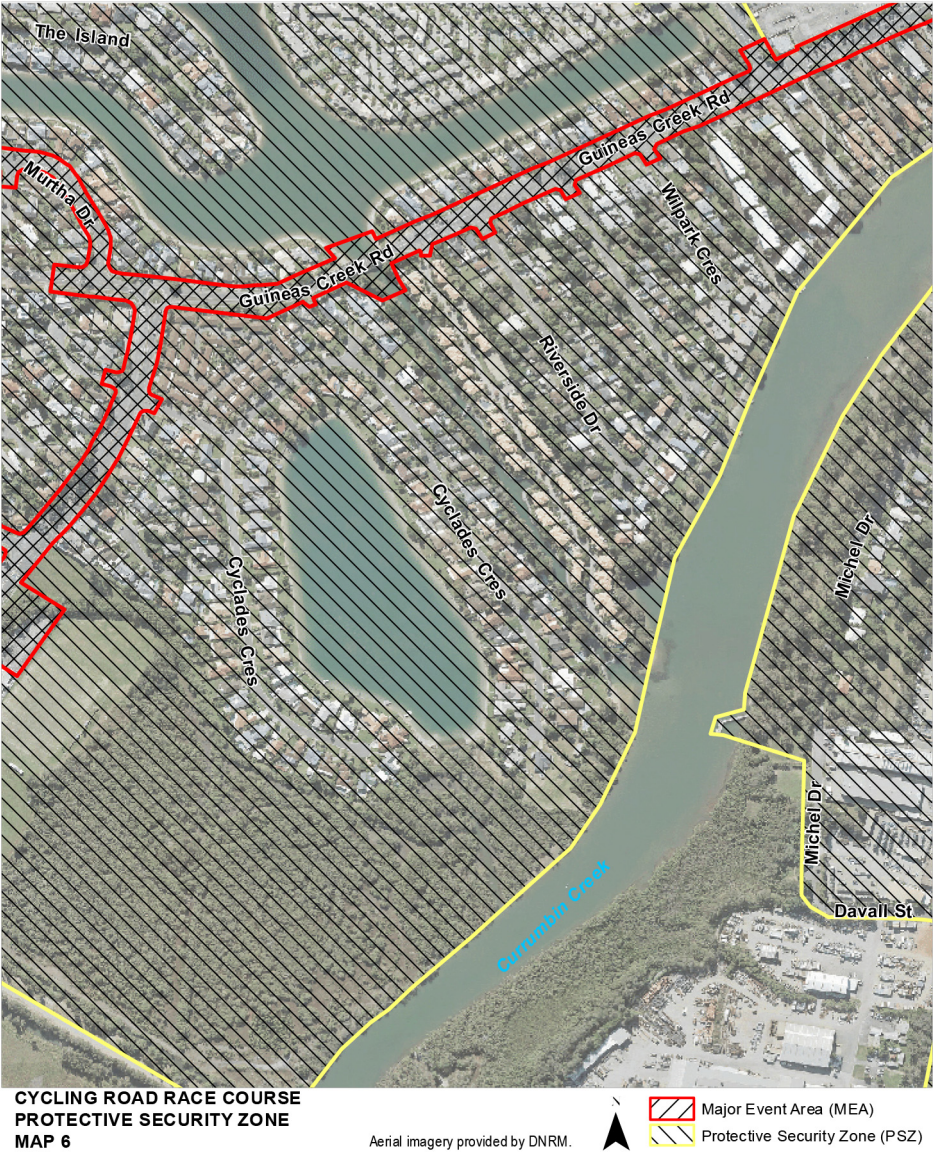
[s 5]



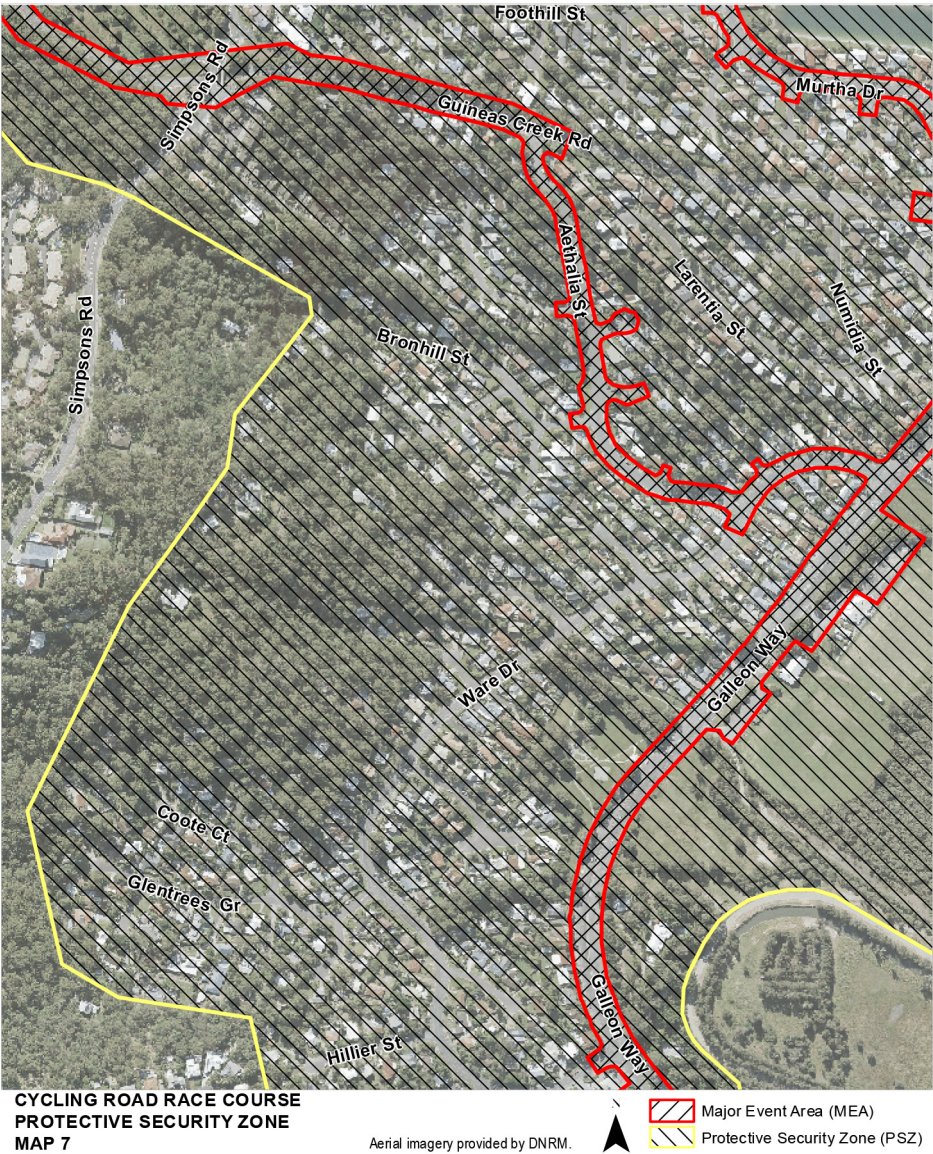


[s 5]





[s 5]



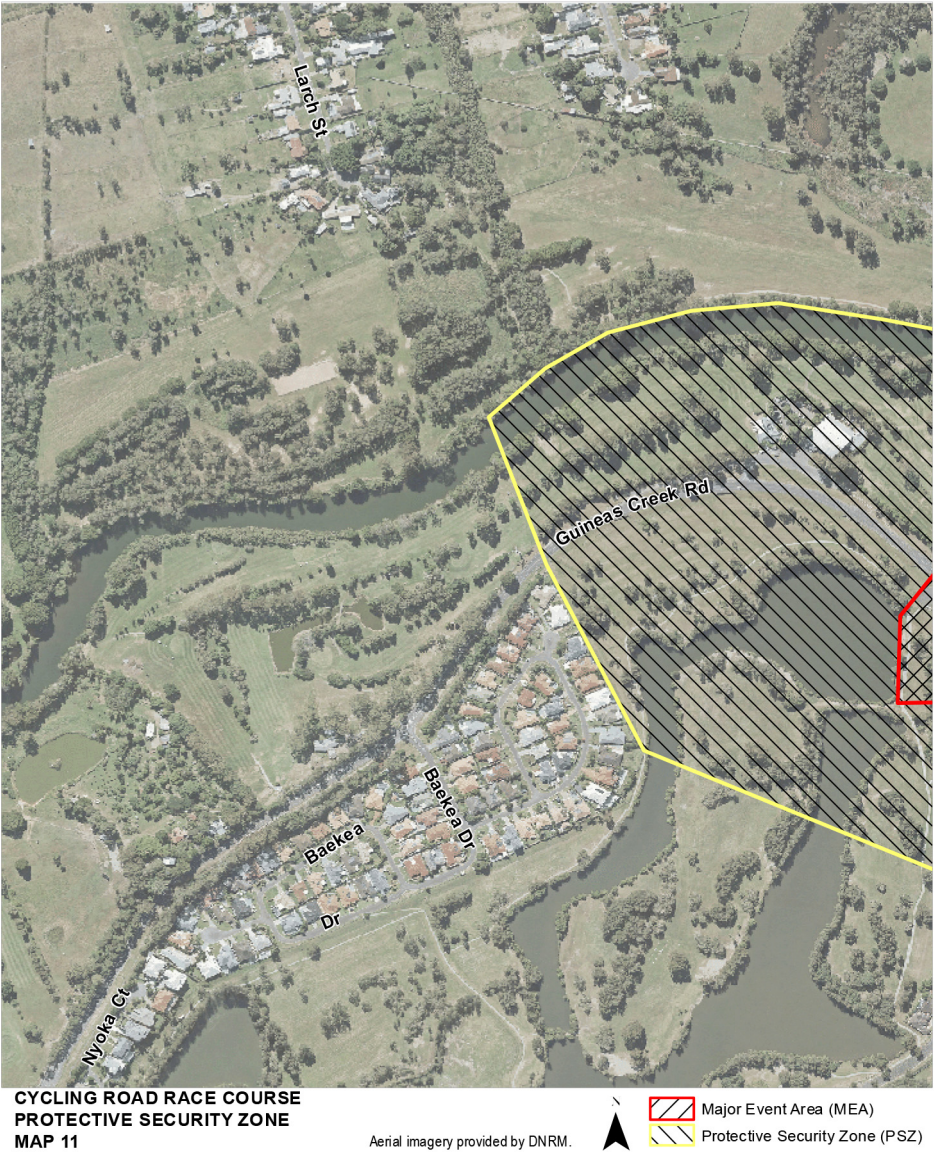


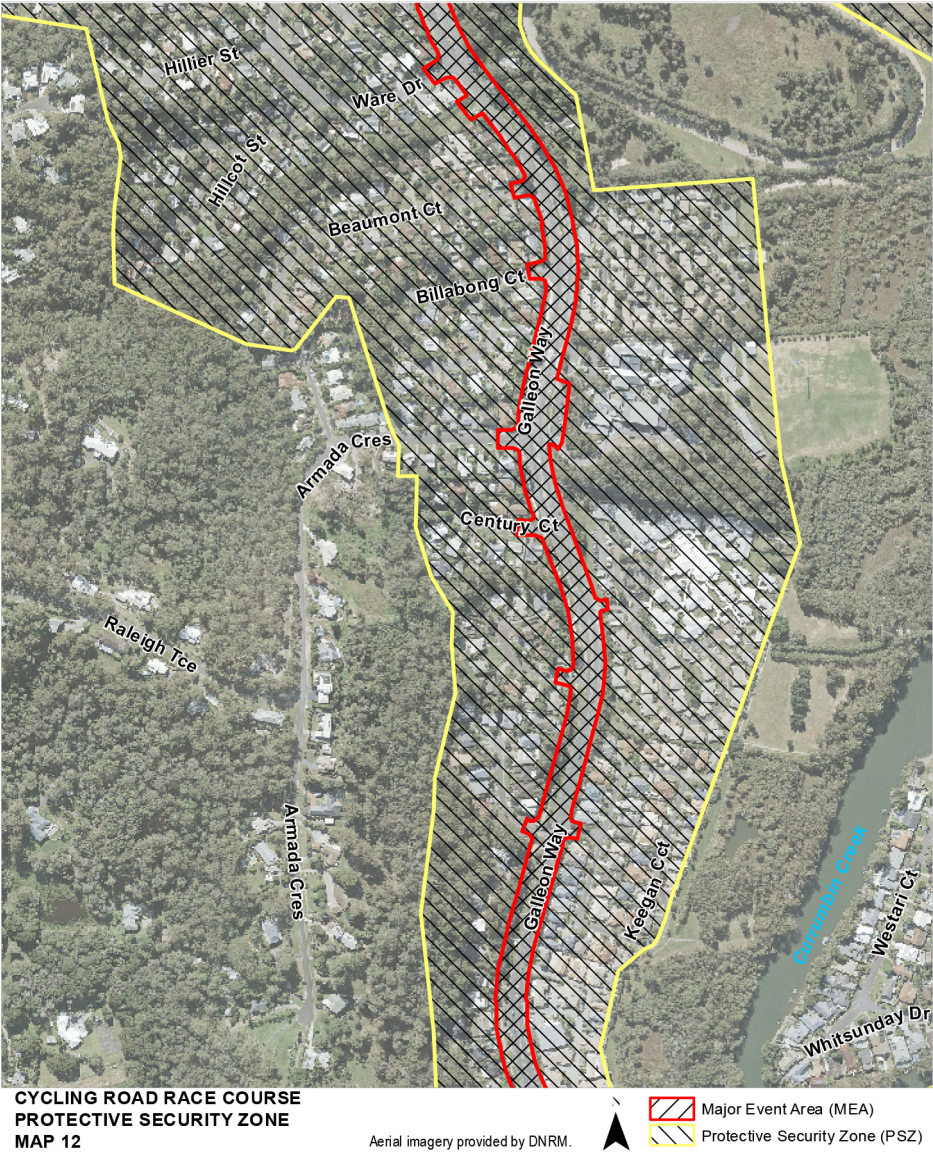
[s 5]



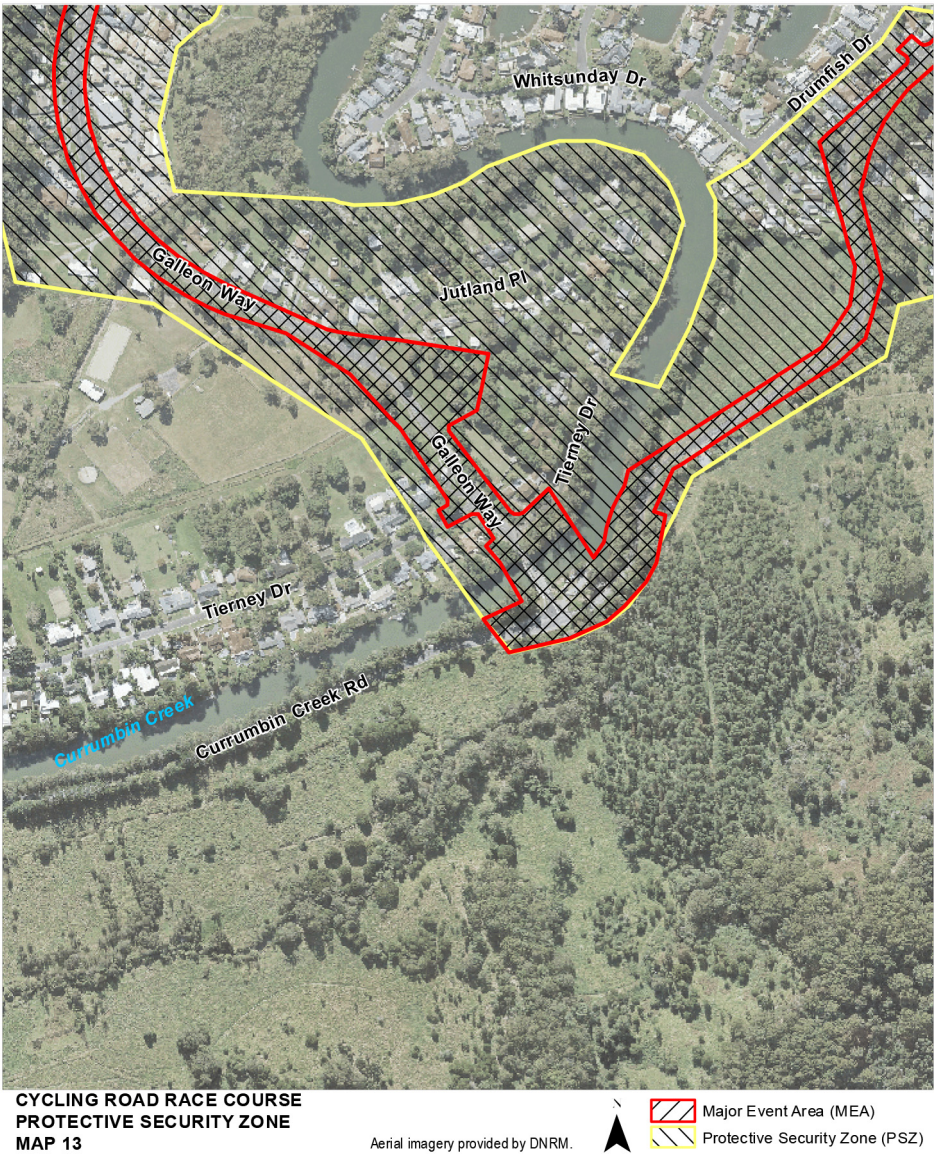


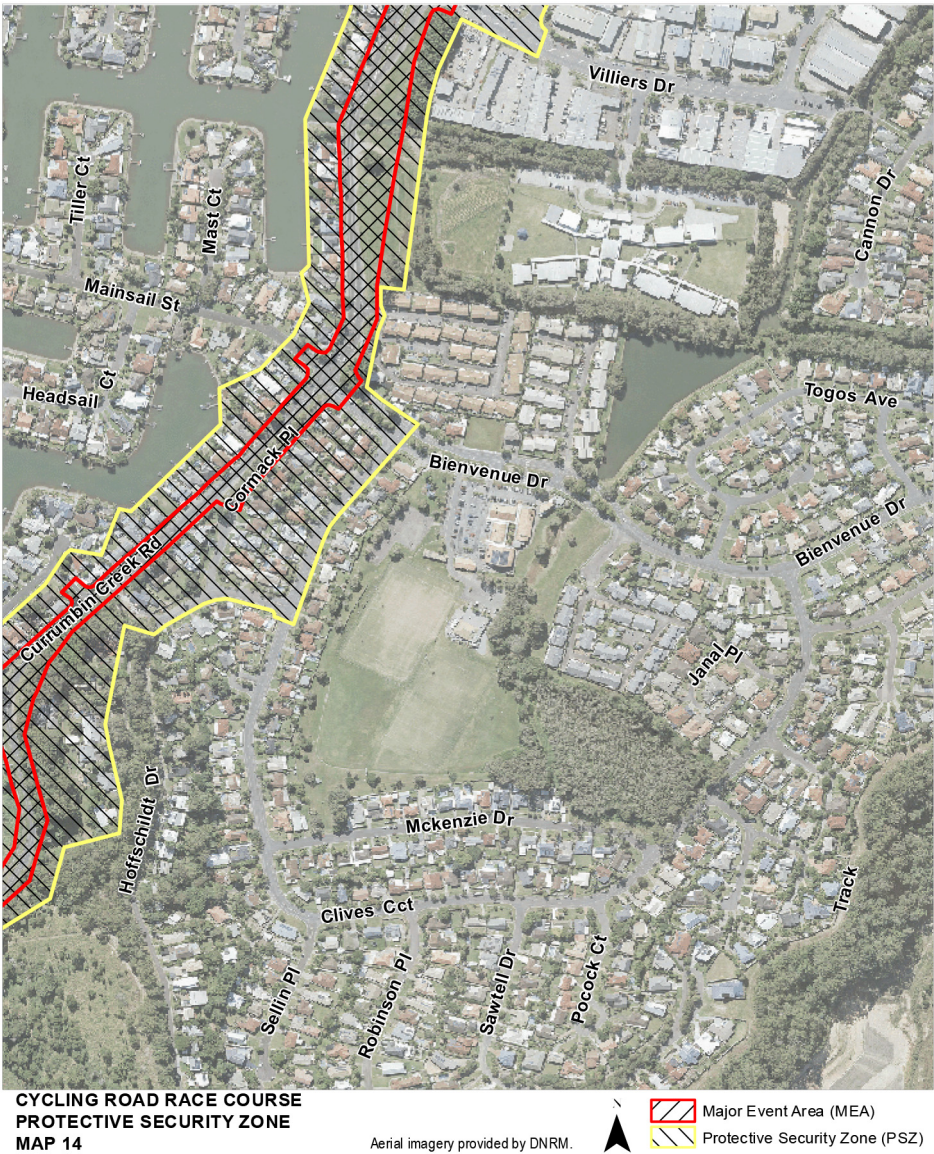
[s 5]



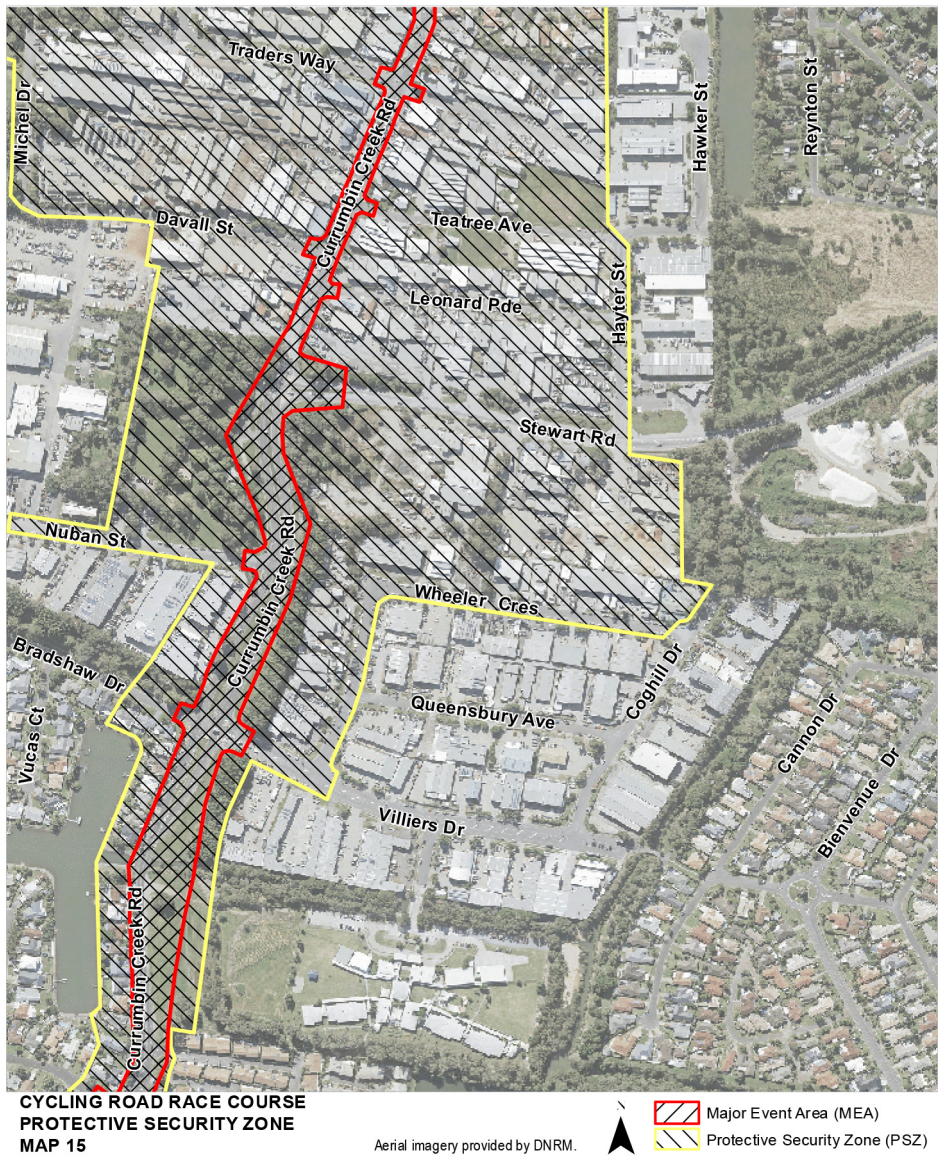


[s 5]



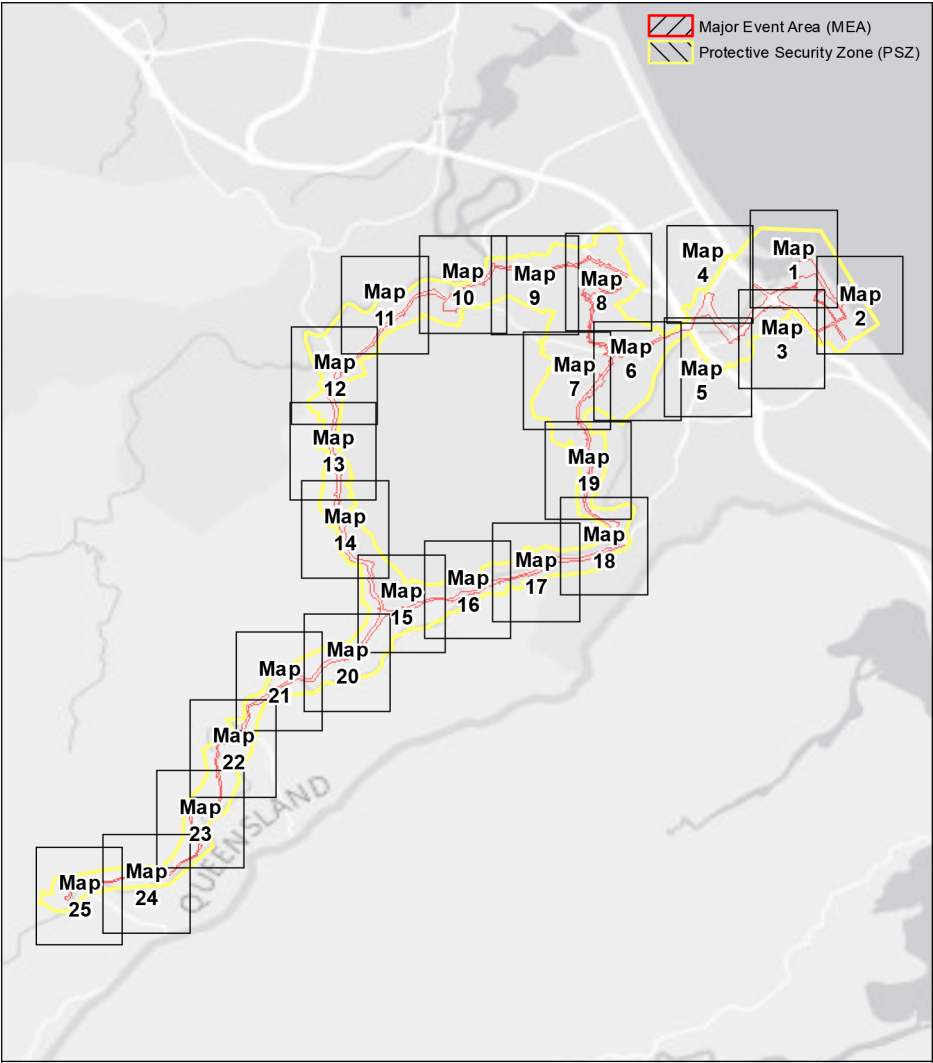


[s 5]



Part 8

Cycling Time Trial Course



CYCLING TIME TRIAL
PROTECTIVE SECURITY ZONE
INDEX TO MAPS

[s 5]





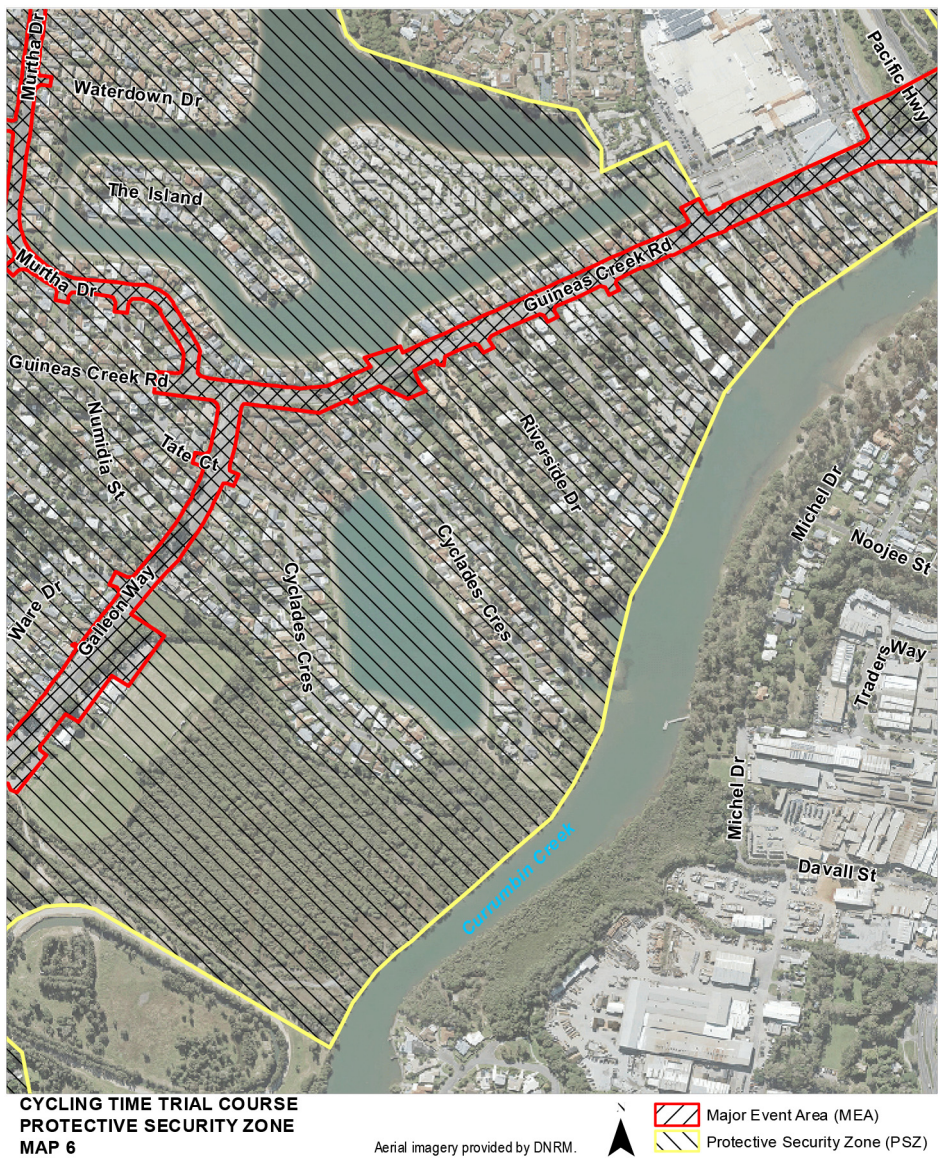
[s 5]



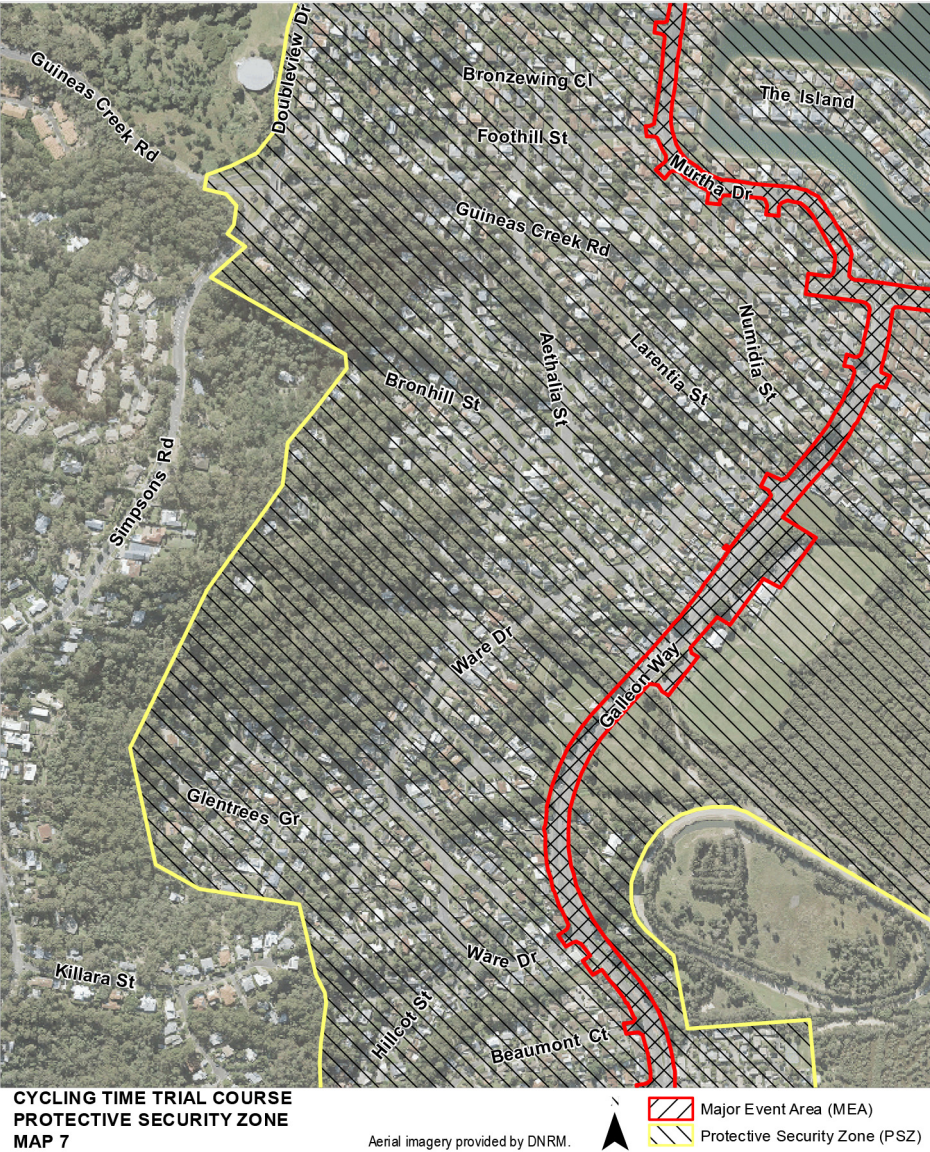


[s 5]





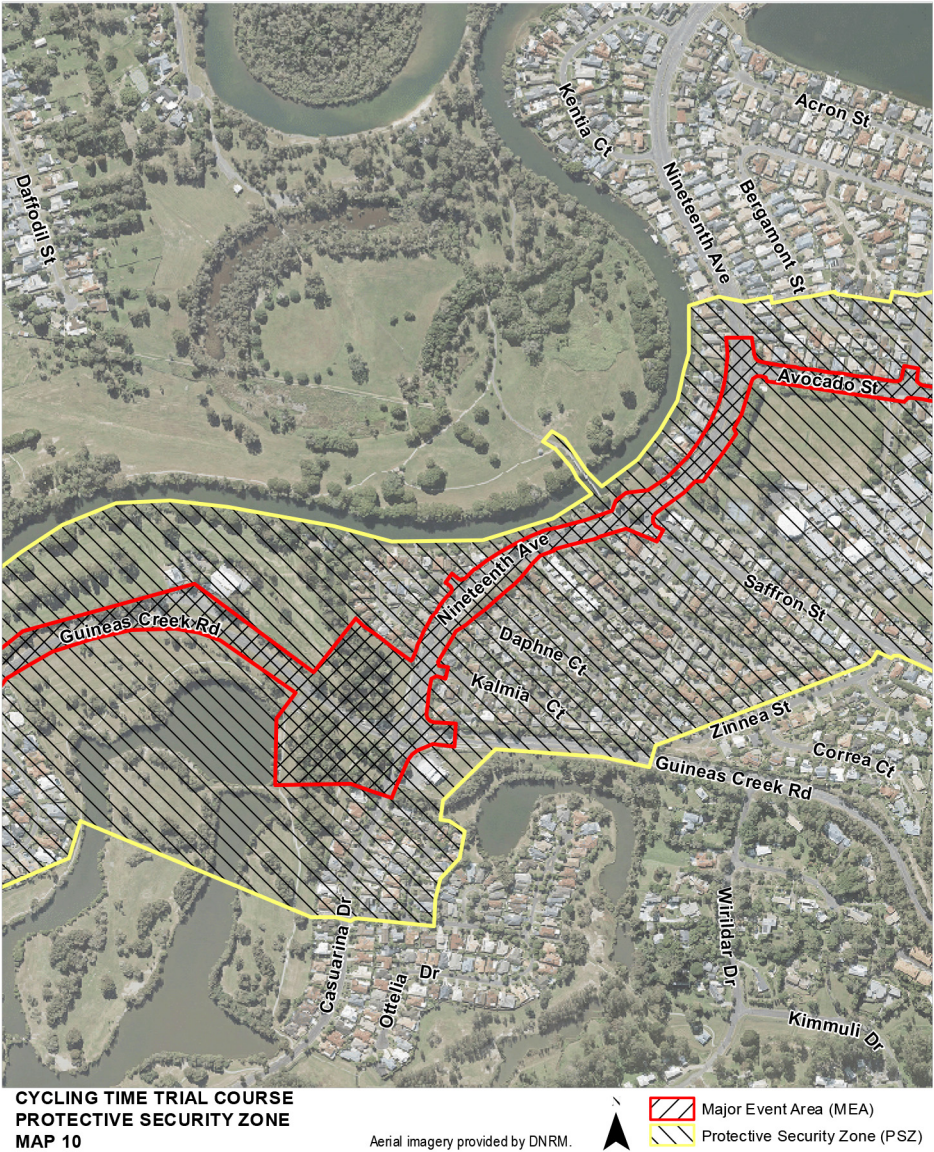
[s 5]



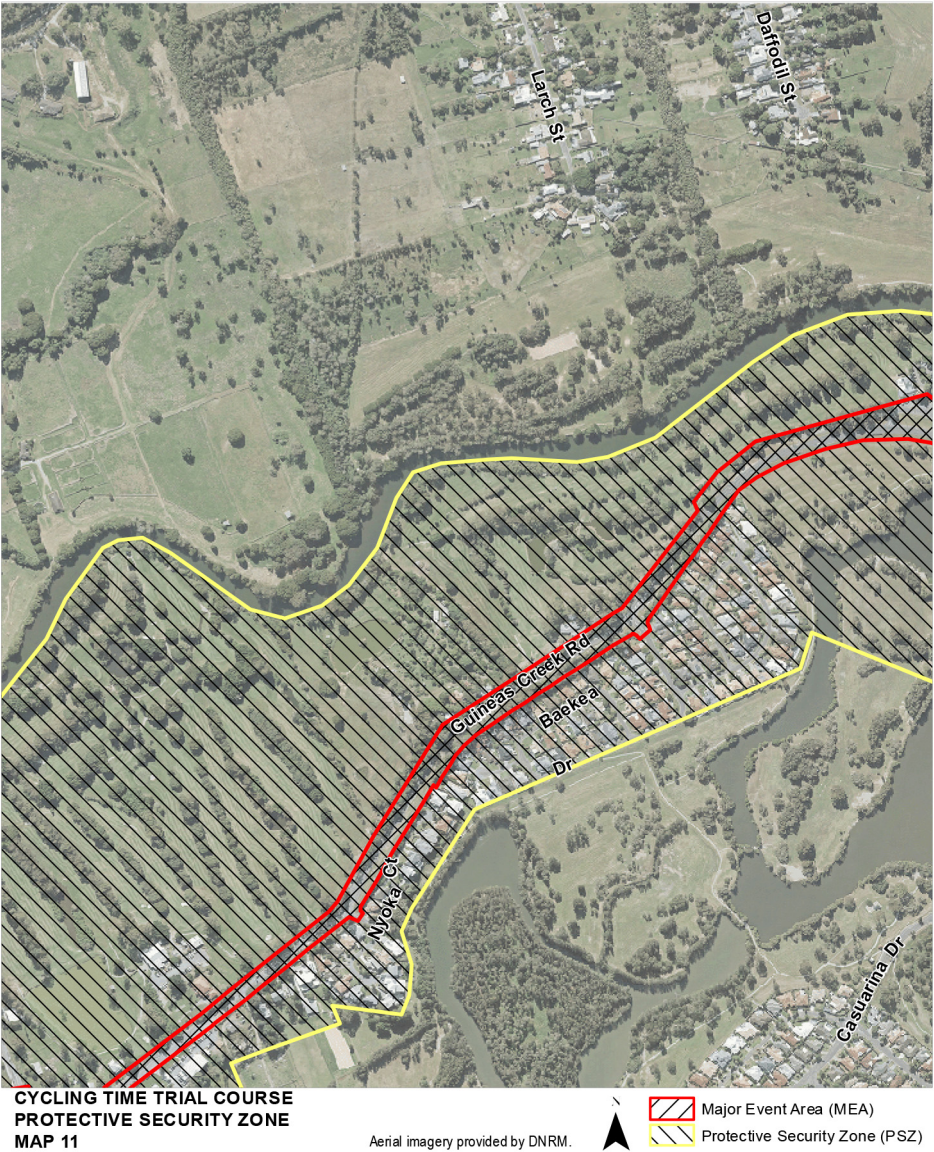


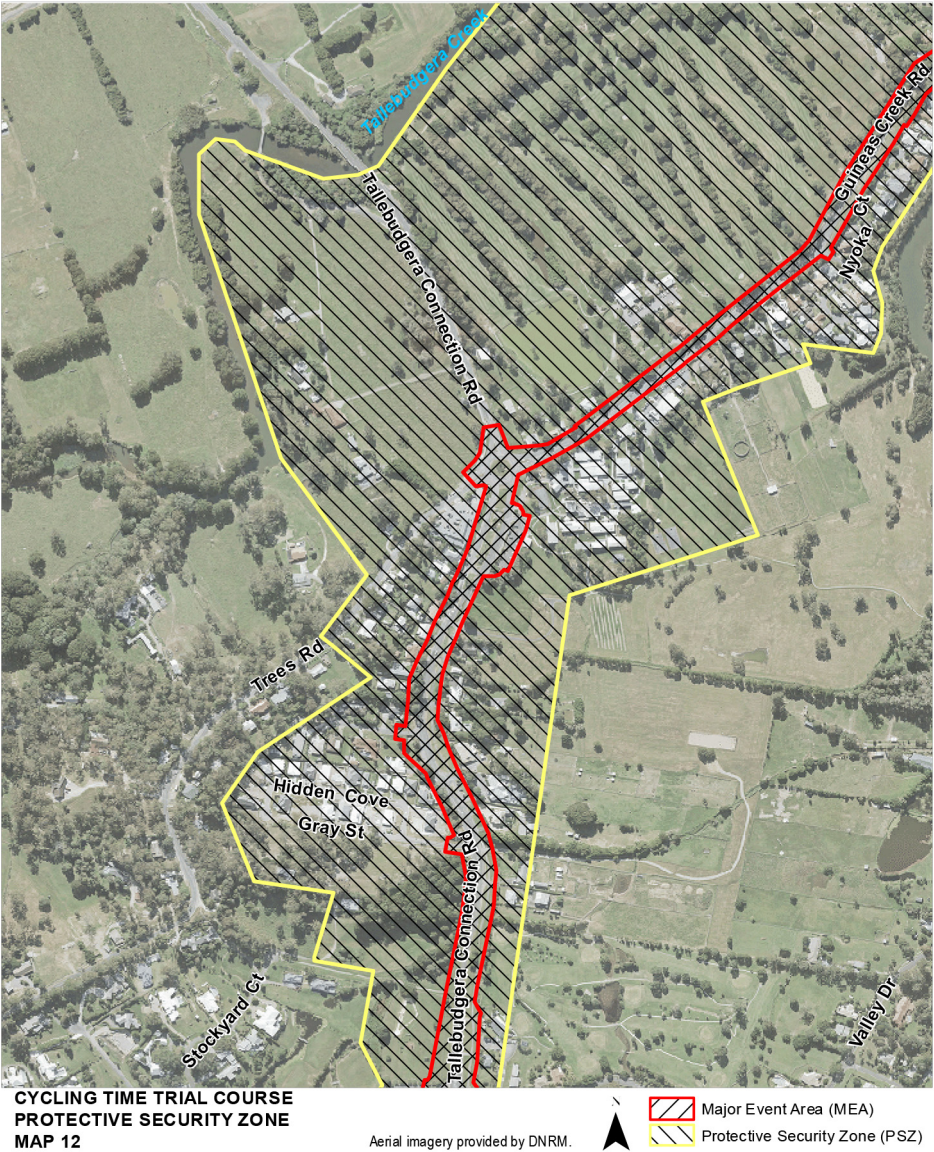
[s 5]



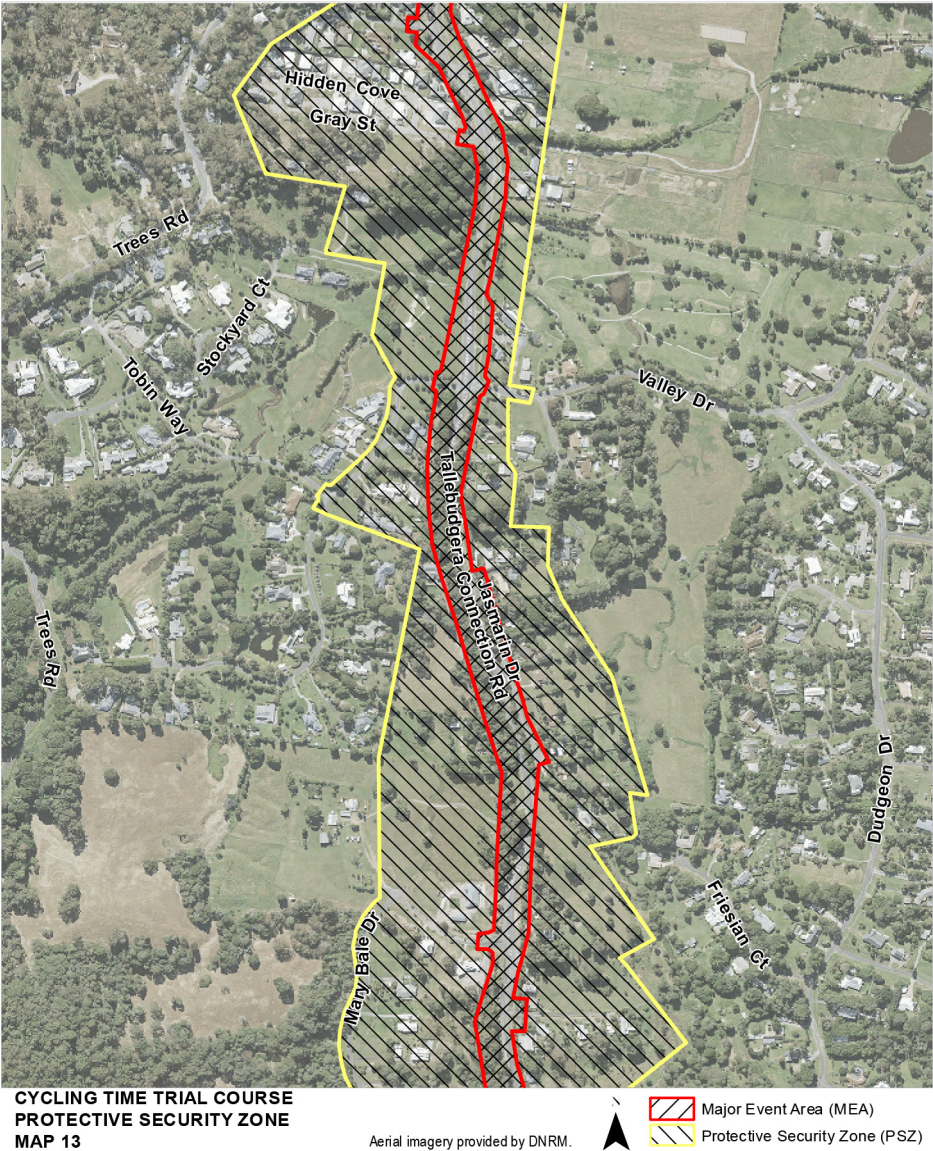


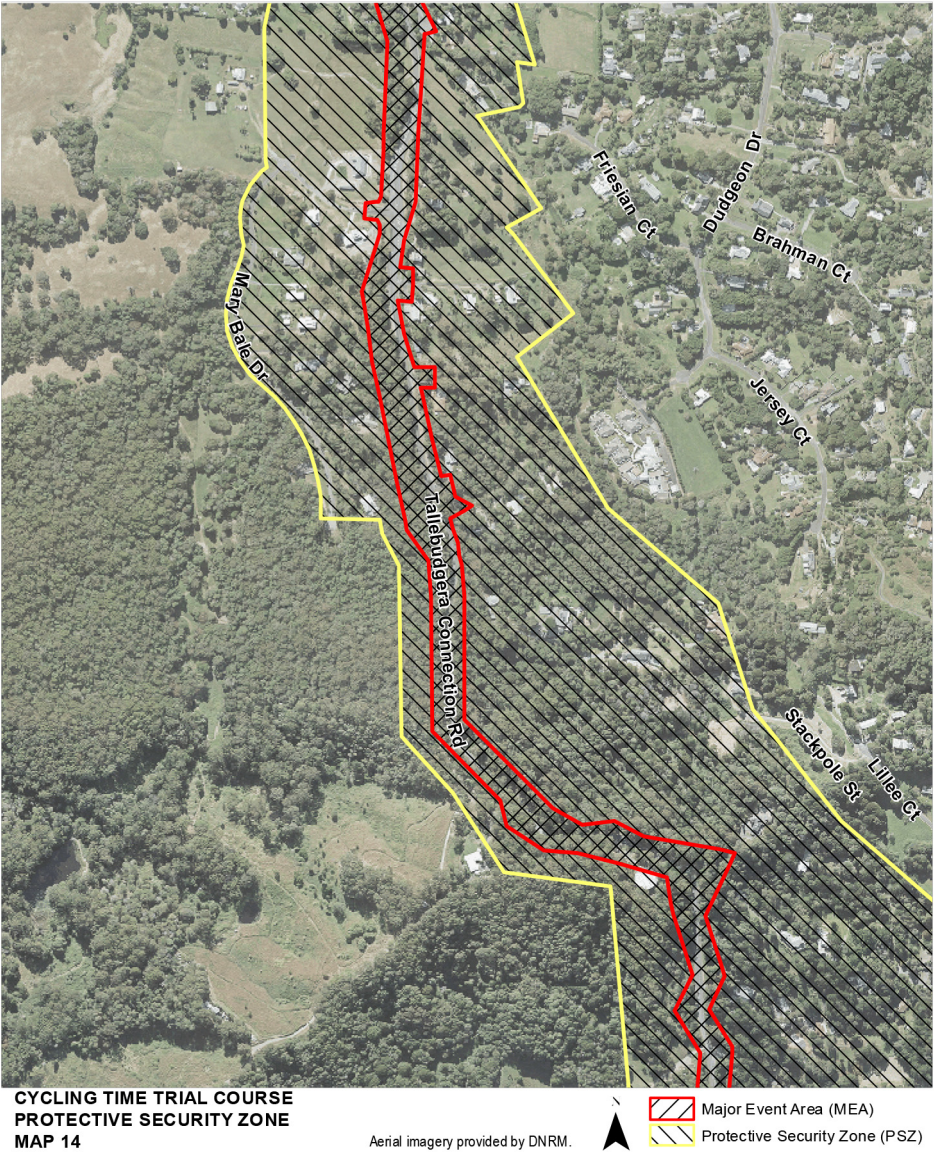
[s 5]





[s 5]



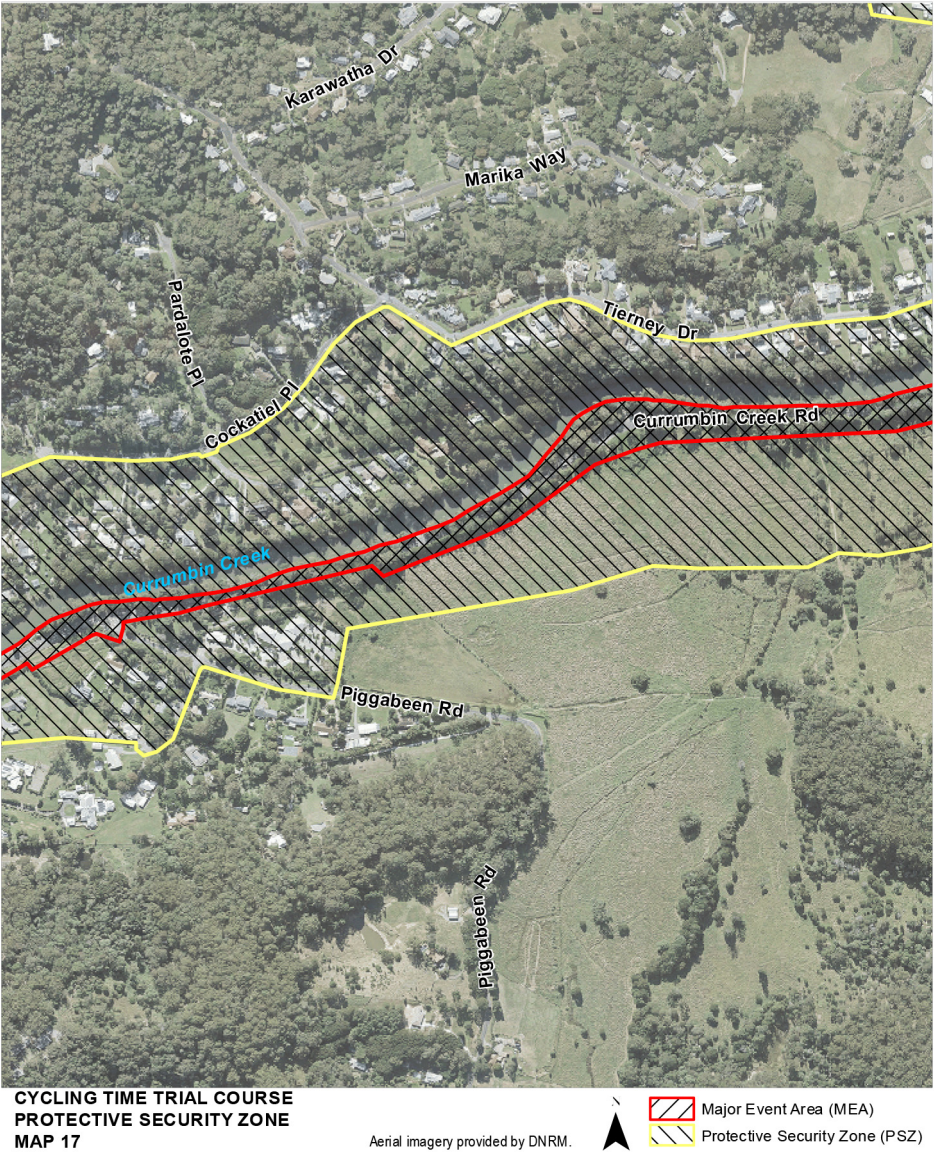


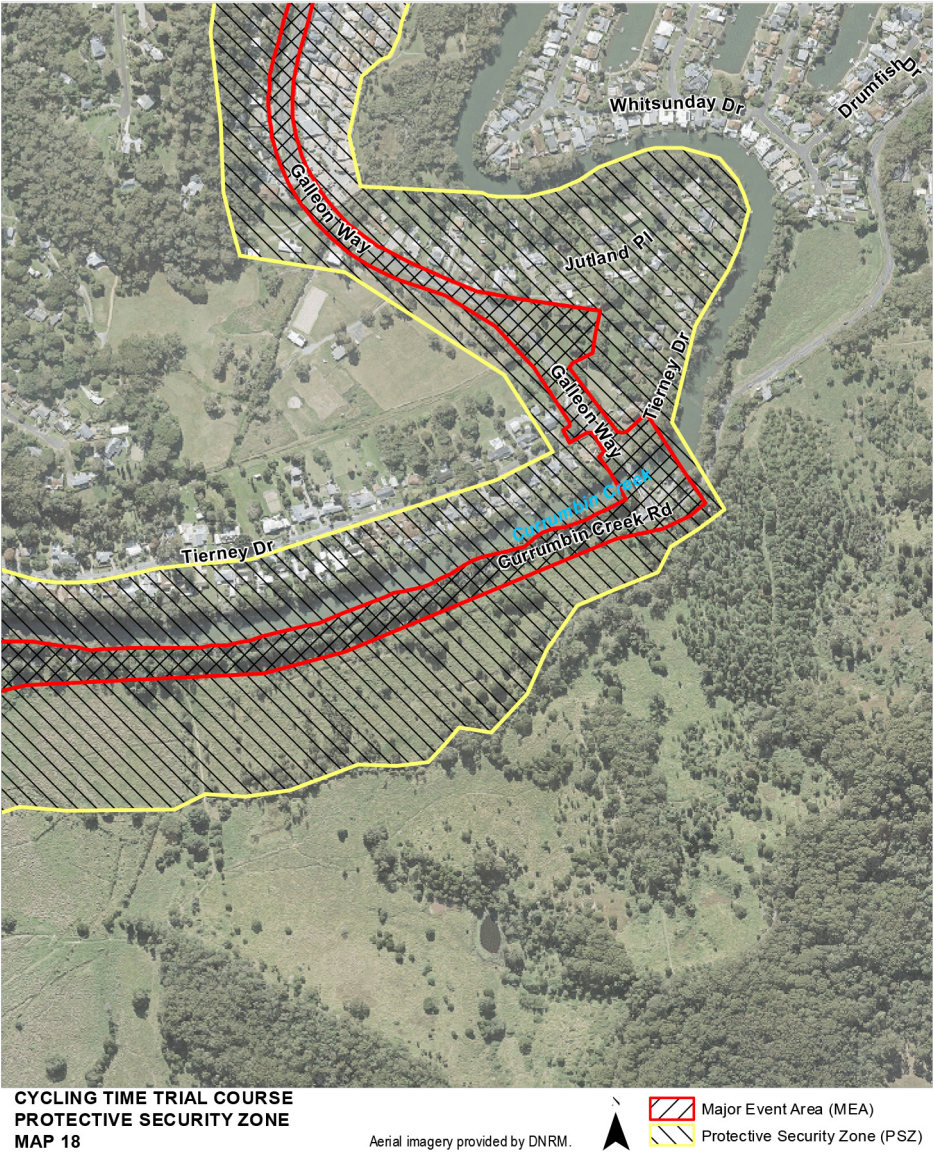
[s 5]



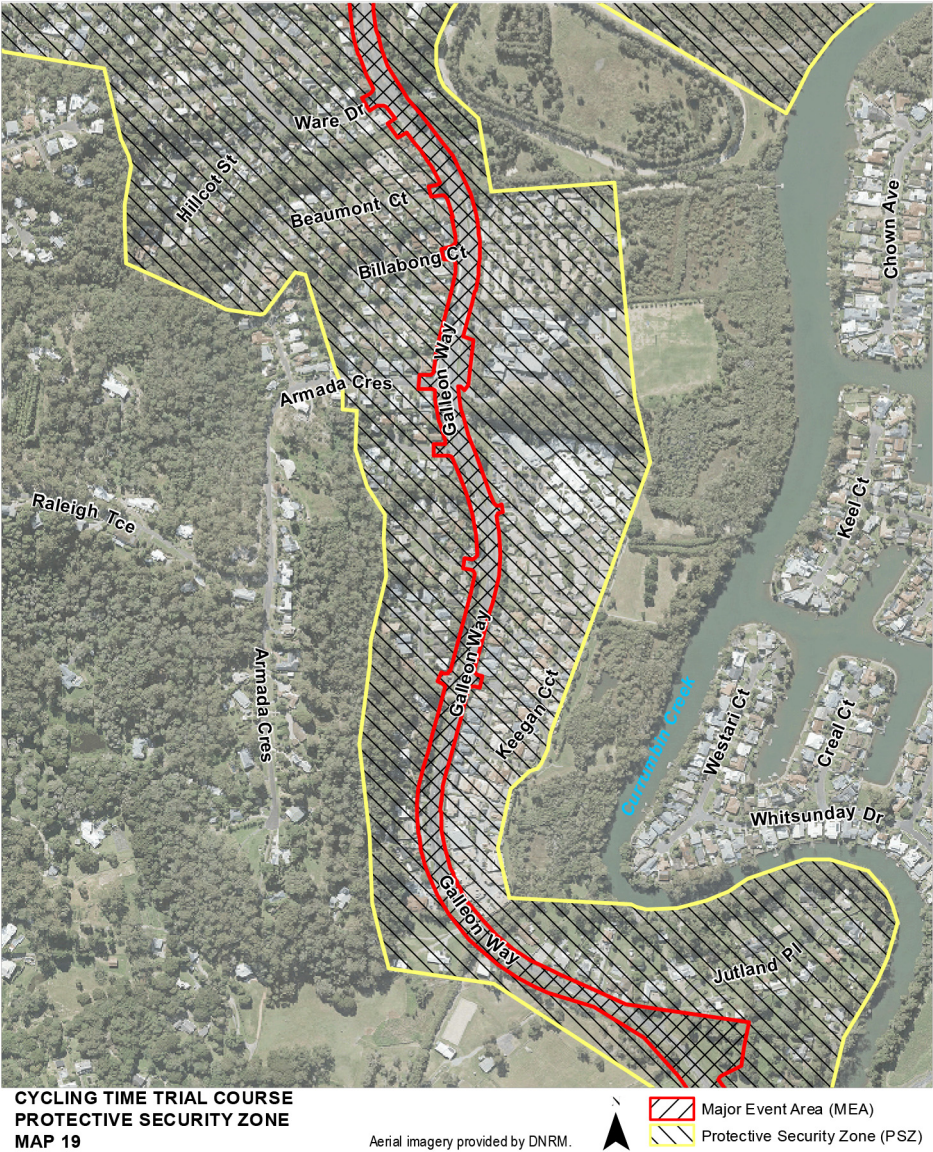


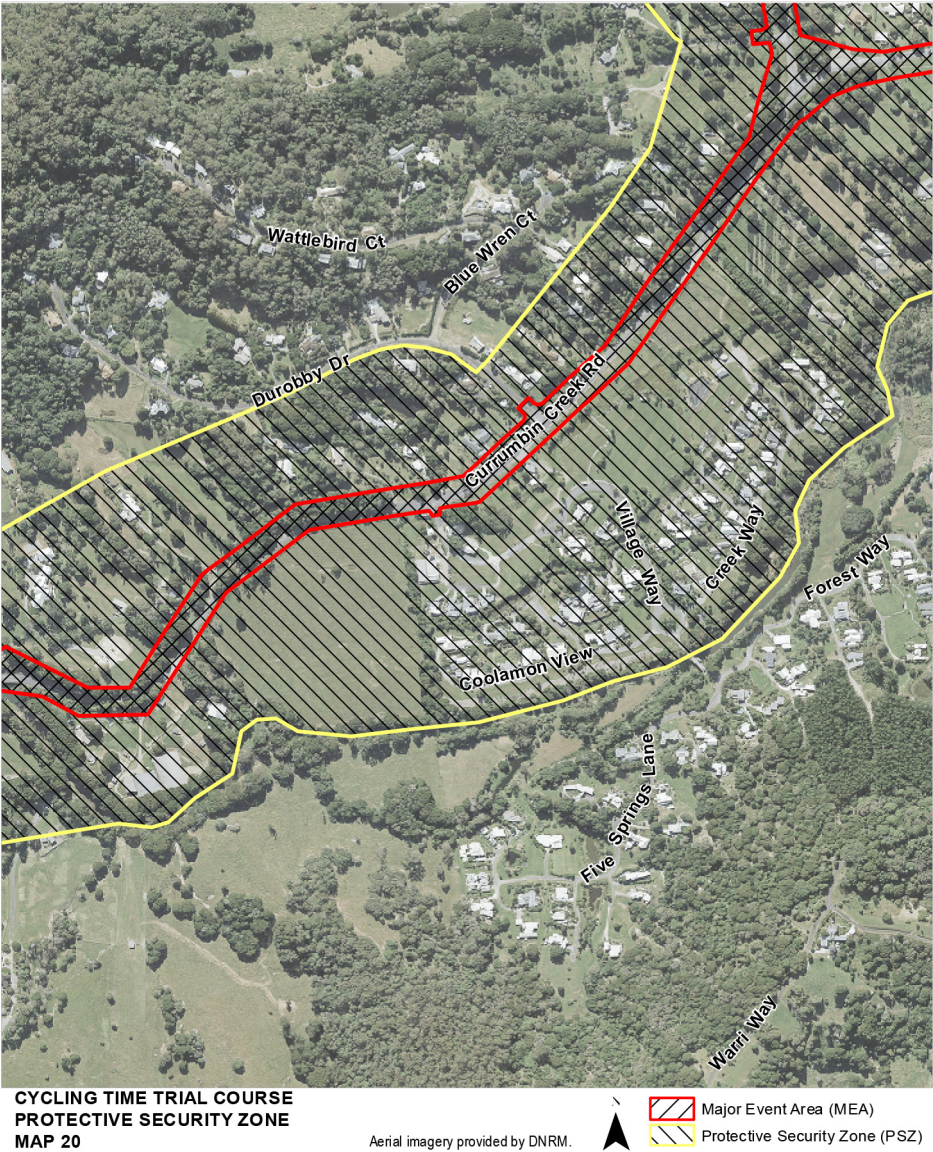
[s 5]



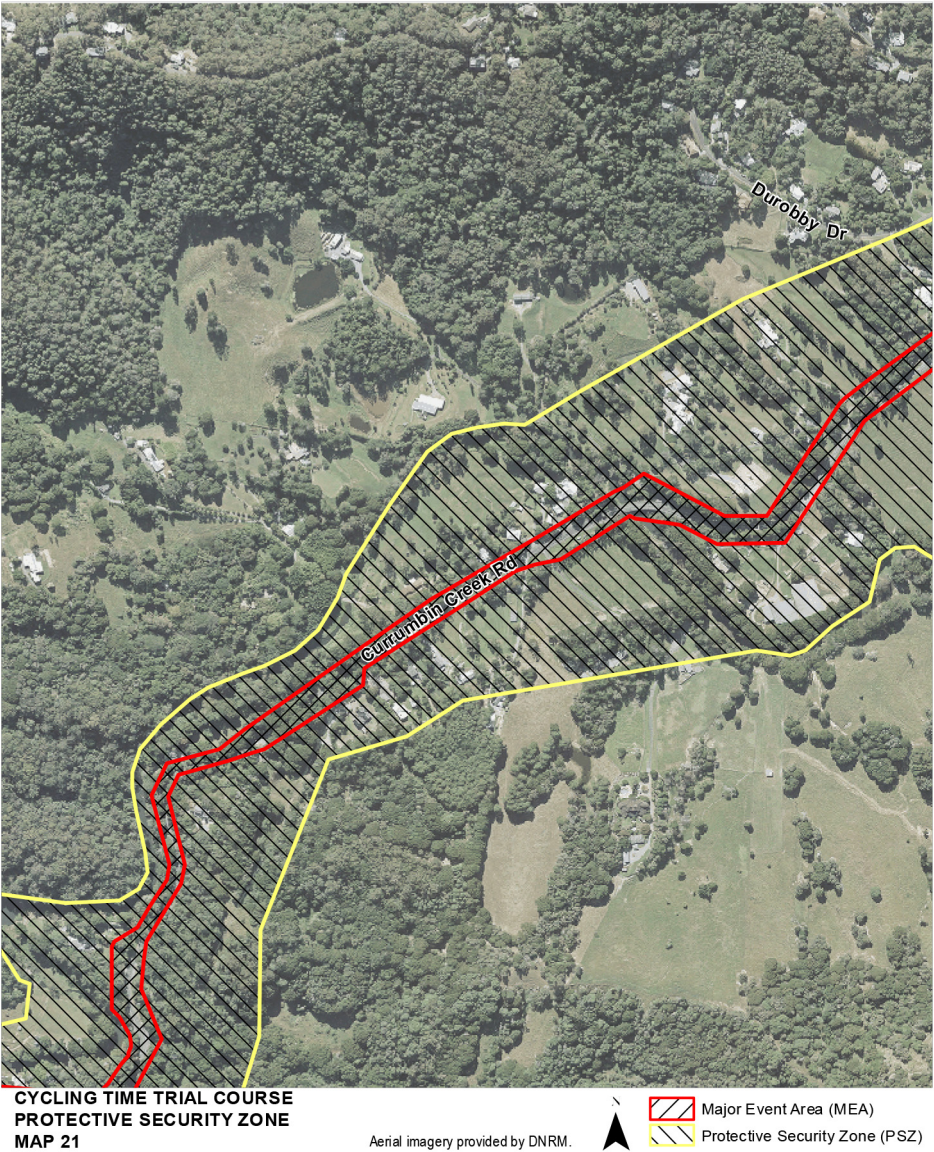


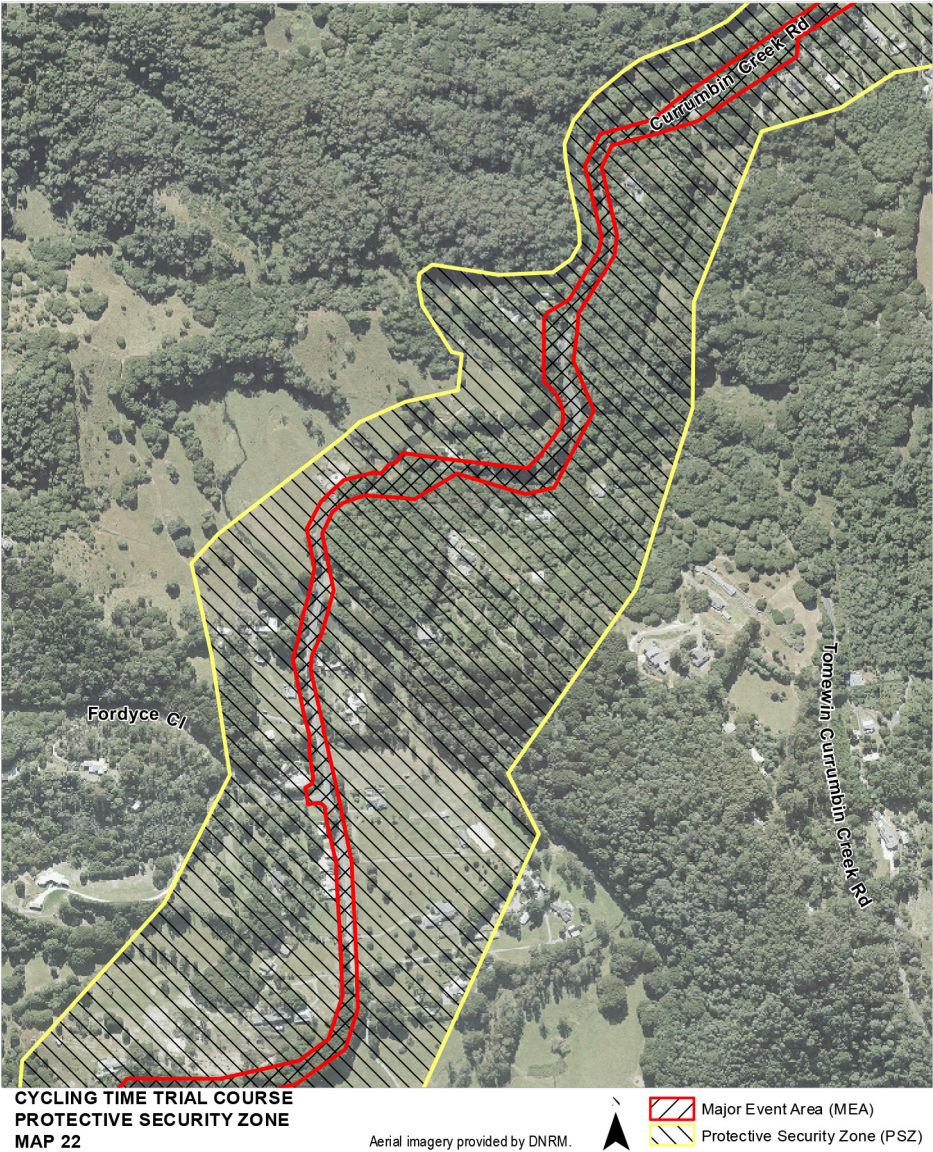
[s 5]



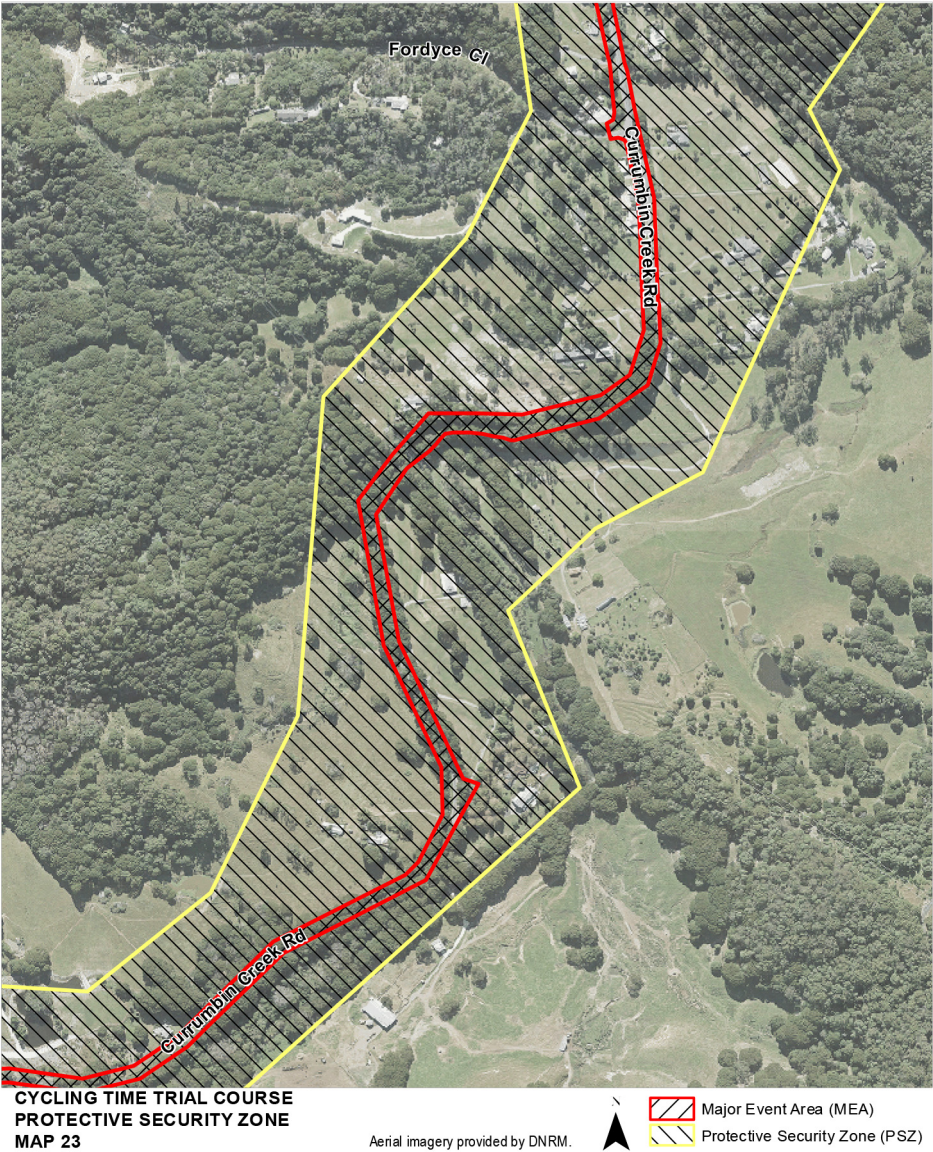


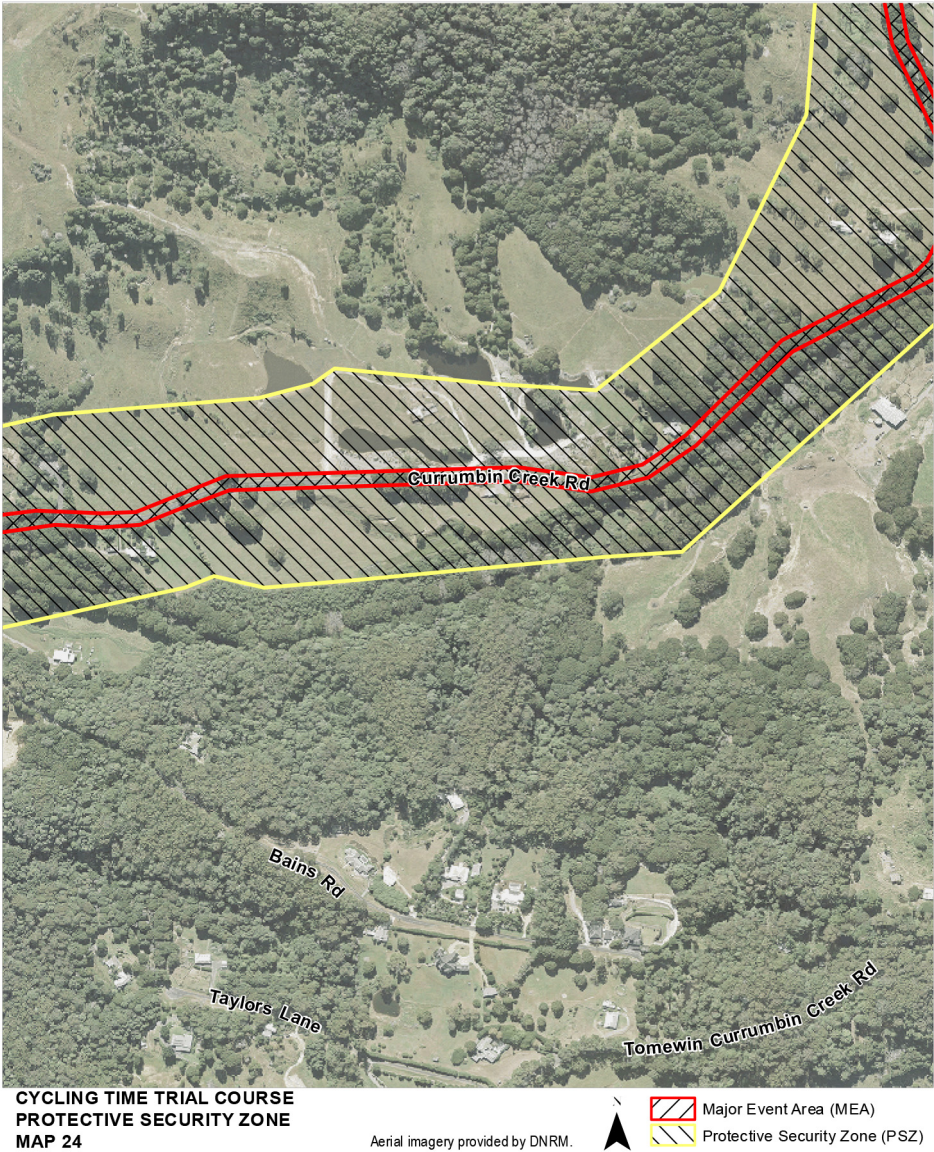
[s 5]



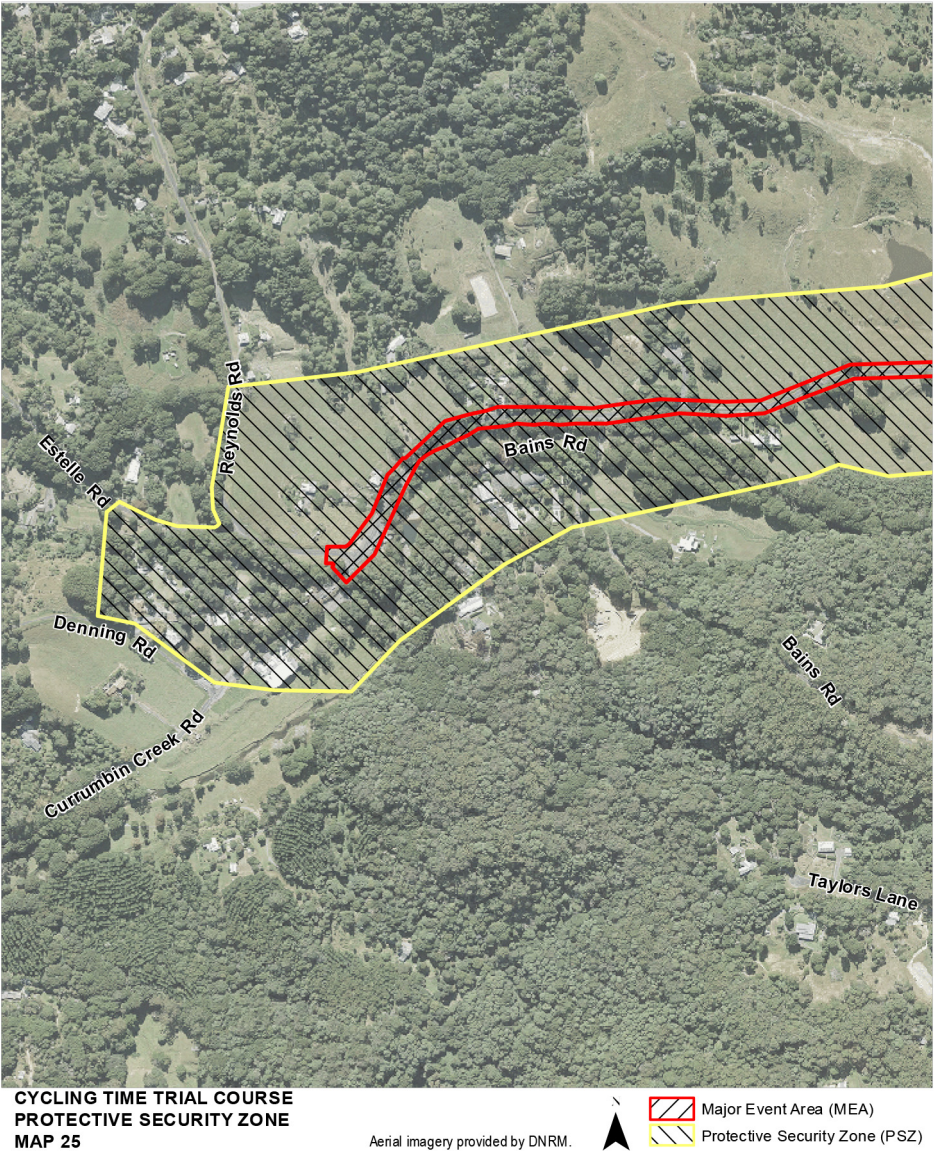


[s 5]





[s 5]



Part 9

Games Family Hotel

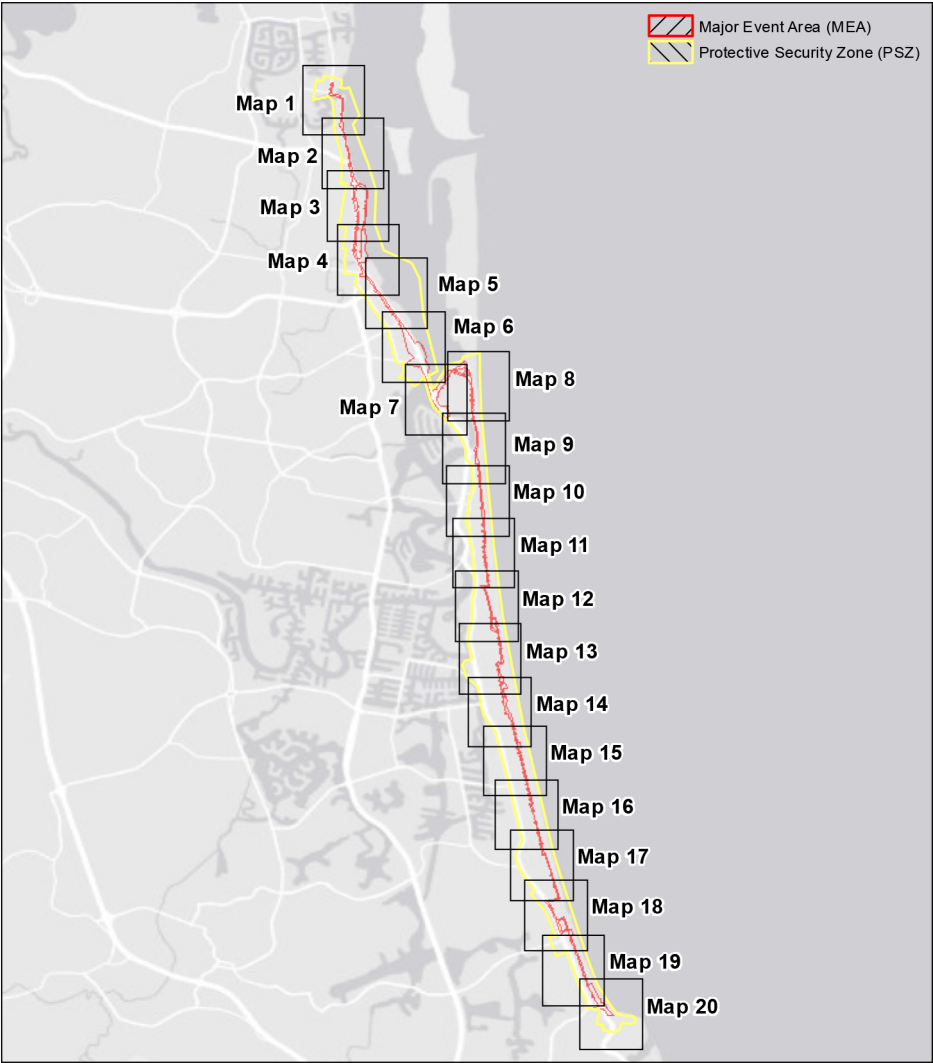


GAMES FAMILY HOTEL PROTECTIVE SECURITY ZONE

Aerial imagery provided by Neamap.

[s 5]

Part 10 Marathon Course



**MARATHON COURSE PROTECTIVE SECURITY ZONES
INDEX TO MAPS**



[s 5]





[s 5]





[s 5]





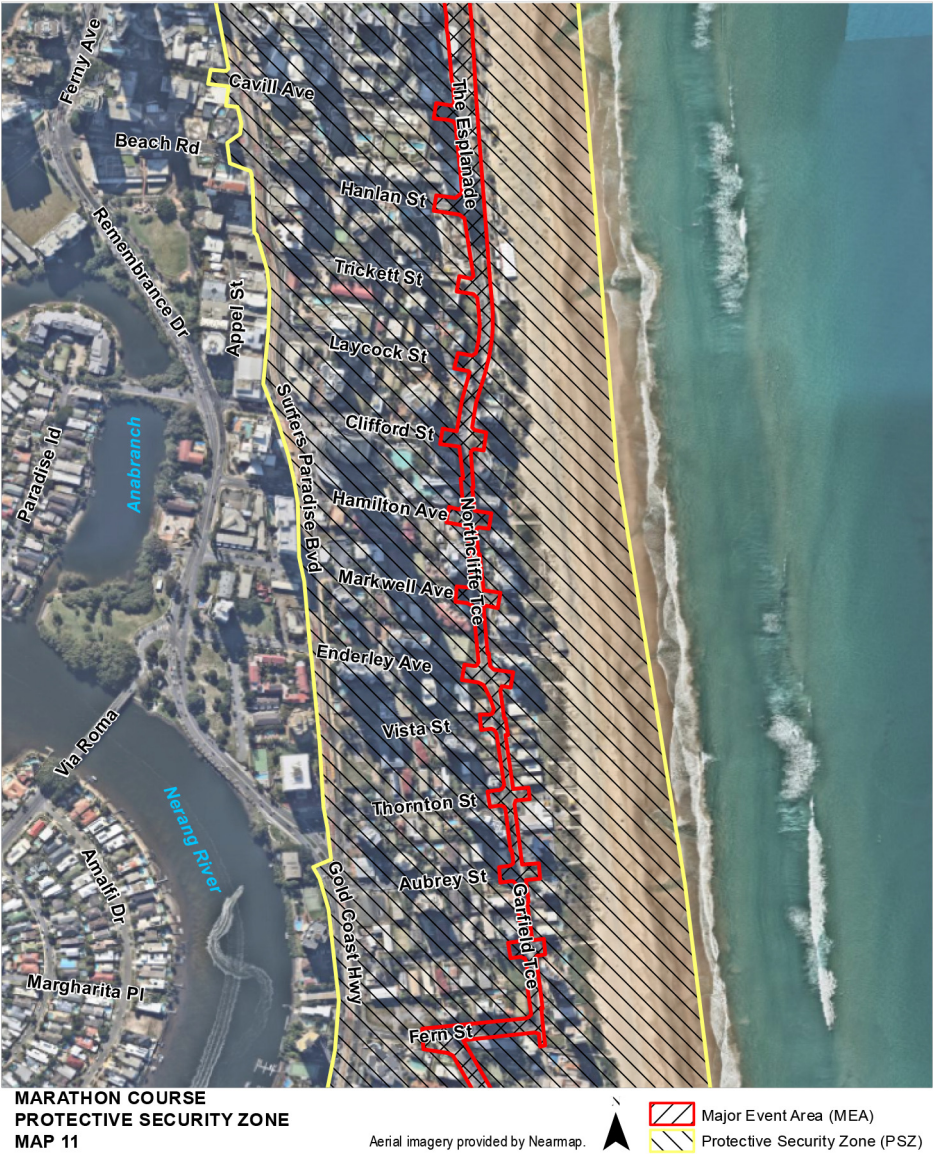
[s 5]





[s 5]





[s 5]





[s 5]





[s 5]





[s 5]





[s 5]



Part 11

Nerang Mountain Biking



Aerial imagery provided by Neamap.

[s 5]

Part 12

Oxenford Studios



Oxenford Studios Protective Security Zone

Aerial imagery provided by Neamap.

Part 13 Robina Stadium



ROBINA STADIUM PROTECTIVE SECURITY ZONE

Aerial imagery provided by Neamap.

[s 5]

Part 14

Southport Broadwater
Precinct



Aerial imagery provided by Neamap.

Part 15

Surfers Paradise
Festival Live Site



SURFERS PARADISE FESTIVAL LIVE SITE PROTECTIVE SECURITY ZONE

Aerial imagery provided by Neamap.

[s 5]

Part 16

Triathlon Field of Play



Part 17 Brisbane Venues



BRISBANE VENUES PROTECTIVE SECURITY ZONE

Aerial imagery provided by Neamap.

[s 5]

Part 18

South Bank Games Festival



SOUTH BANK GAMES FESTIVAL PROTECTIVE SECURITY ZONE

Aerial imagery provided by Neamap.

Part 19

Townsville Games Festival



TOWNSVILLE GAMES FESTIVAL PROTECTIVE SECURITY ZONE

Aerial imagery provided by Nearnmap.

[s 5]

Part 20

Townsville Venues CBD



Part 21

Townsville Venues Entertainment Centre



TOWNSVILLE VENUES ENTERTAINMENT CENTRE PROTECTIVE SECURITY ZONE
Aerial imagery provided by Nearnmap.

[s 5]

Part 22

Cairns Games Festival



CAIRNS GAMES FESTIVAL PROTECTIVE SECURITY ZONE

Aerial imagery provided by Neamap.

Part 23 Cairns Venues



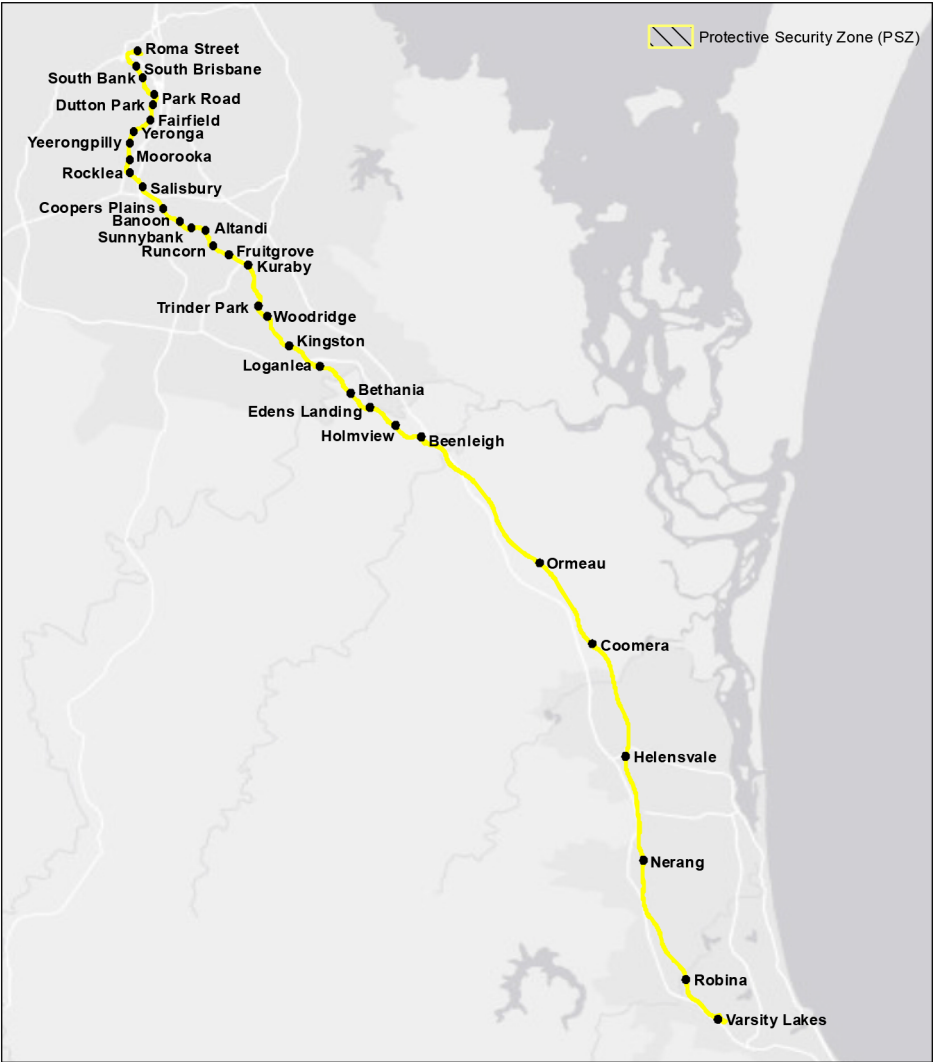
CAIRNS VENUES PROTECTIVE SECURITY ZONE

Aerial imagery provided by Neamap.

[s 5]

Part 24

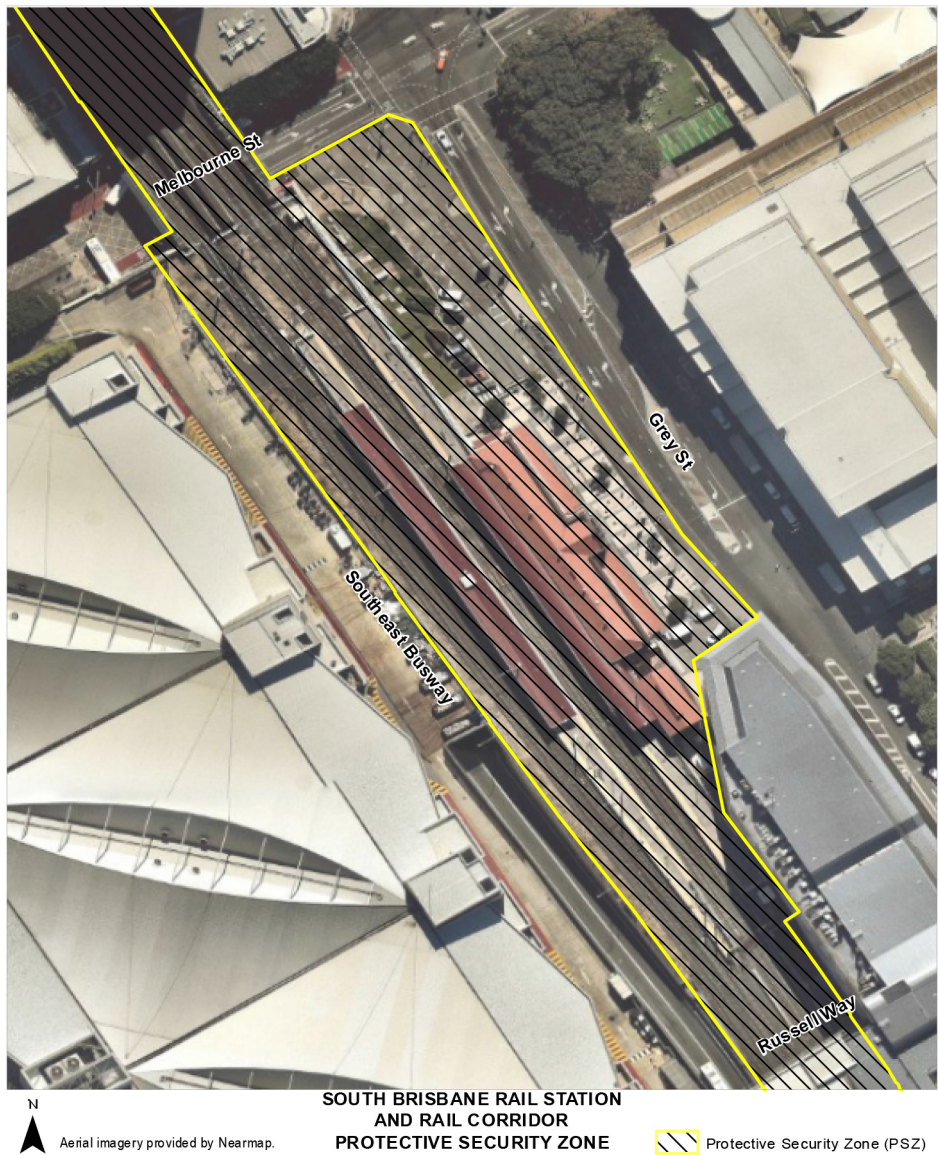
Gold Coast Train
Line—Heavy Rail
Network

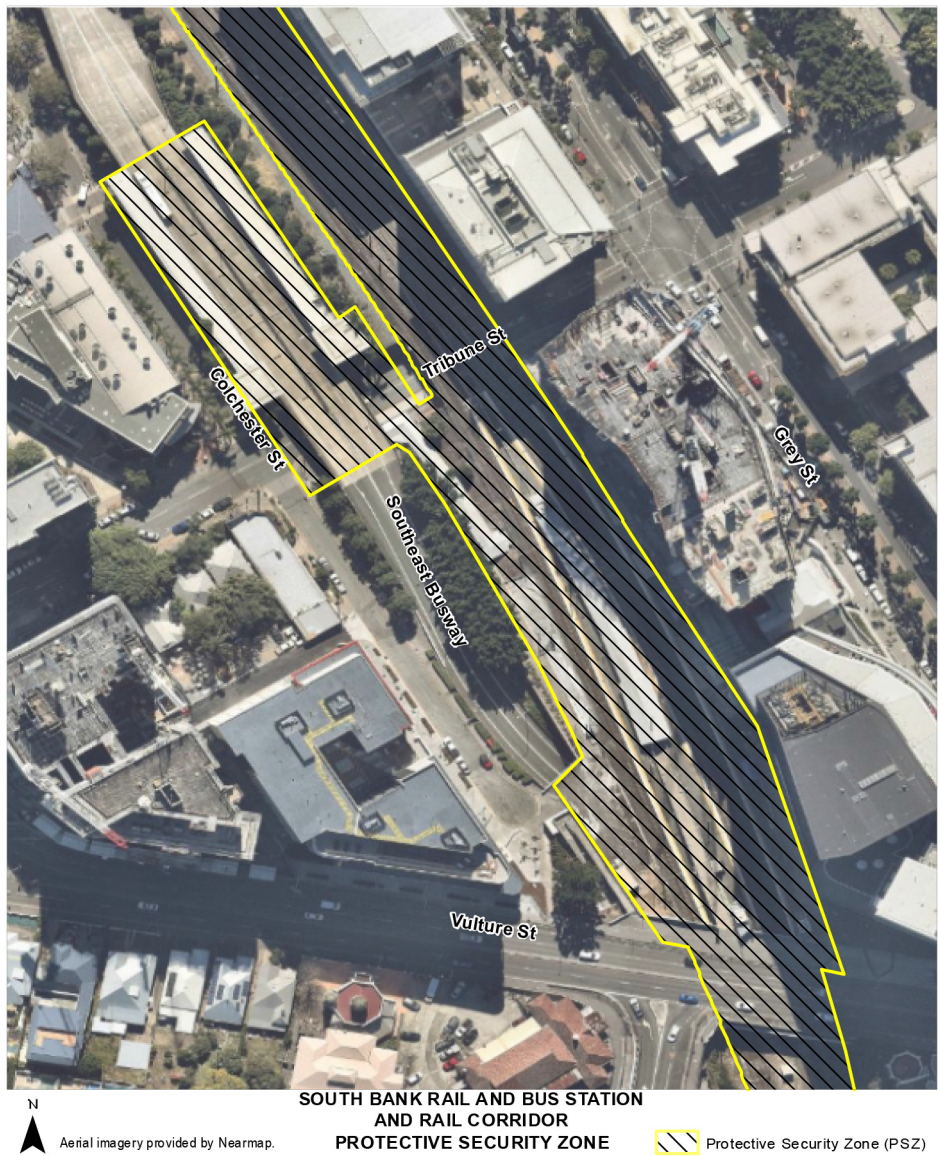


GOLD COAST TRAIN LINE – HEAVY RAIL NETWORK
PROTECTIVE SECURITY ZONE
INDEX TO MAPS



[s 5]





[s 5]



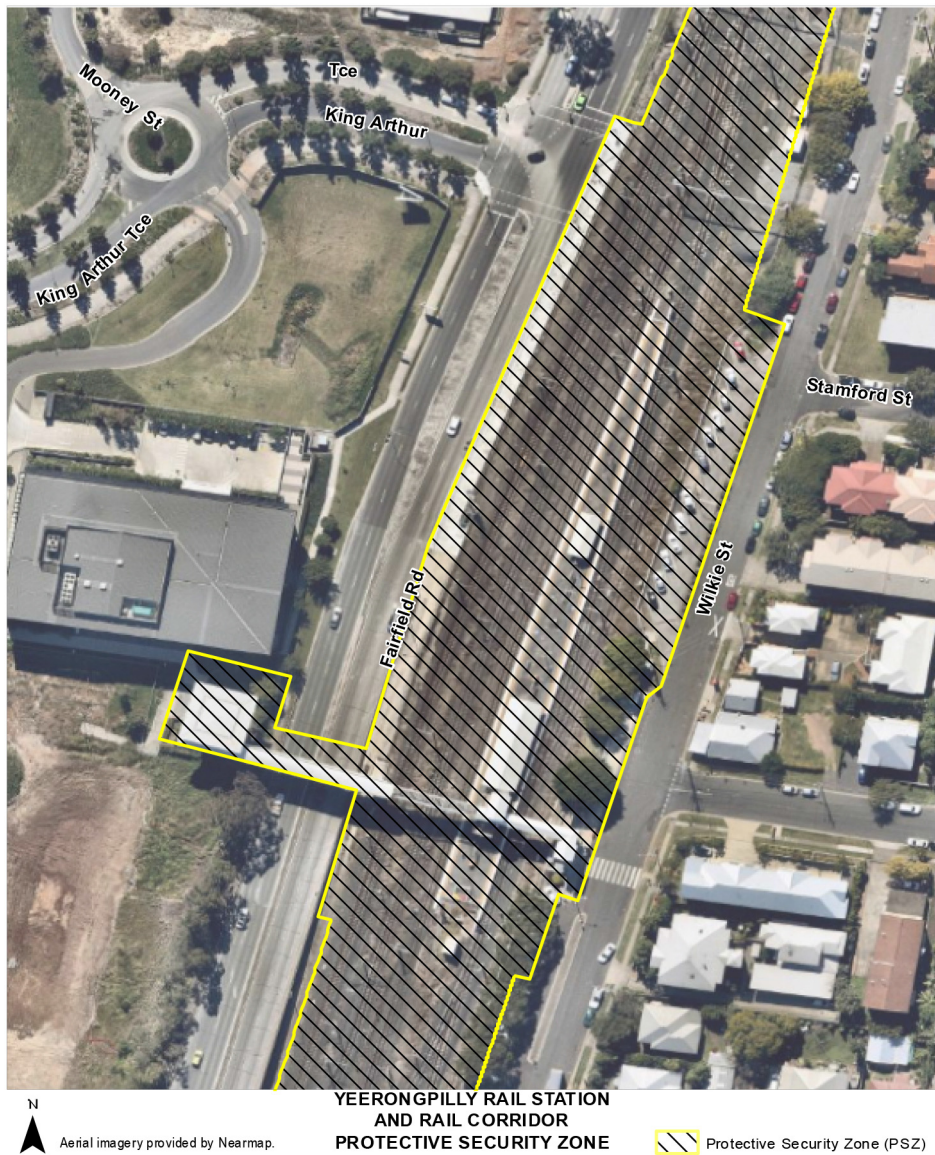


[s 5]





[s 5]





[s 5]





[s 5]





[s 5]





[s 5]





[s 5]





[s 5]





[s 5]





[s 5]





[s 5]





[s 5]





[s 5]

Part 25

Gold Coast Light Rail
Network (G:Link)



GOLD COAST LIGHT RAIL NETWORK (G:LINK)
PROTECTIVE SECURITY ZONE
INDEX TO MAPS



[s 5]





[s 5]





[s 5]





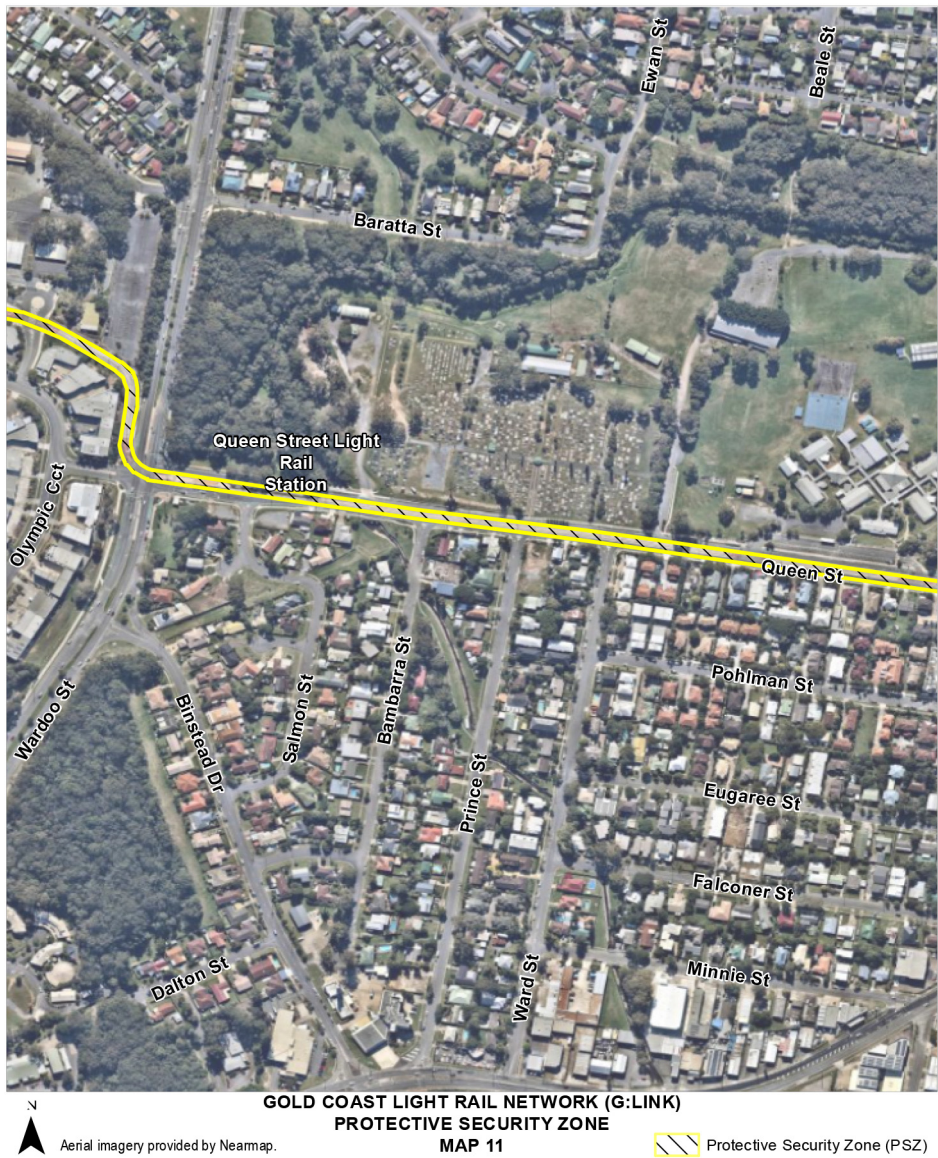
[s 5]





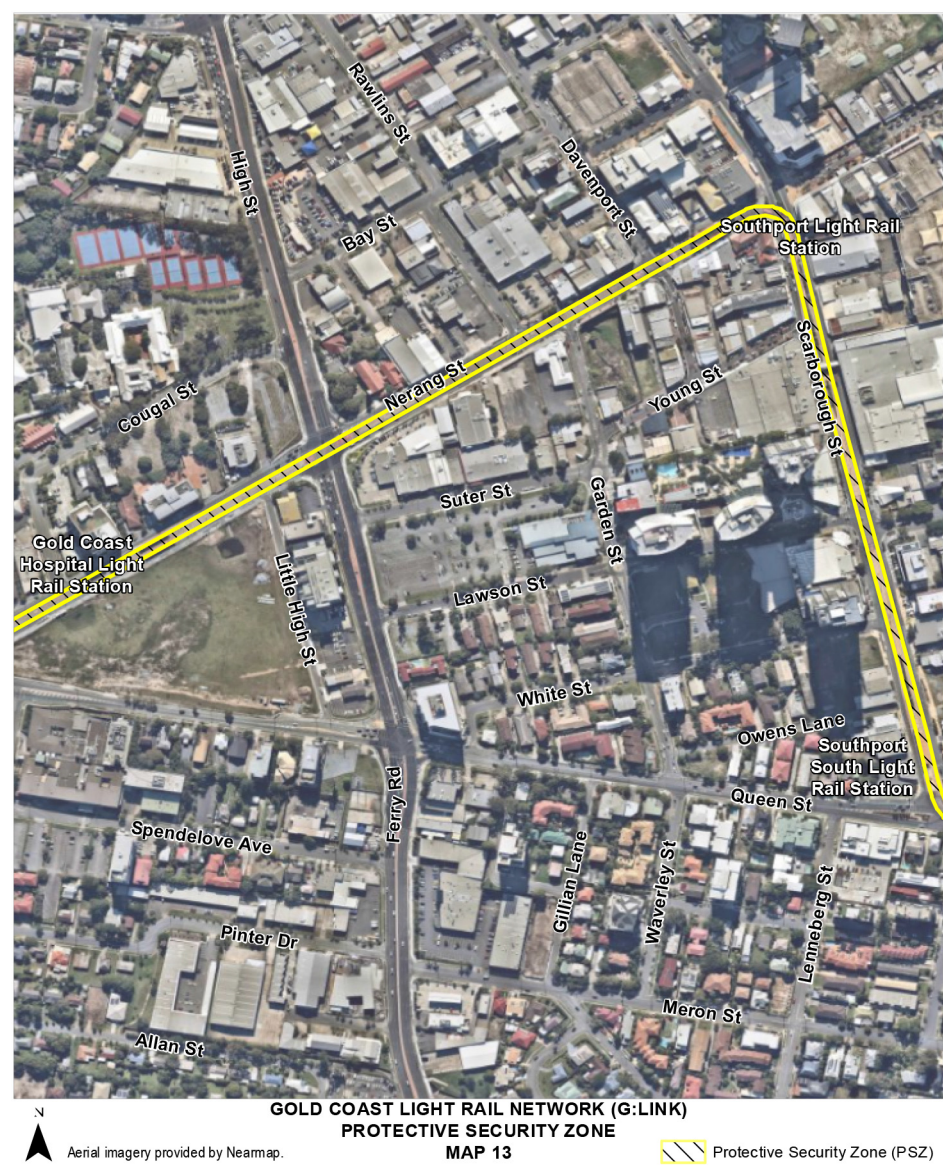
[s 5]





[s 5]





[s 5]





[s 5]



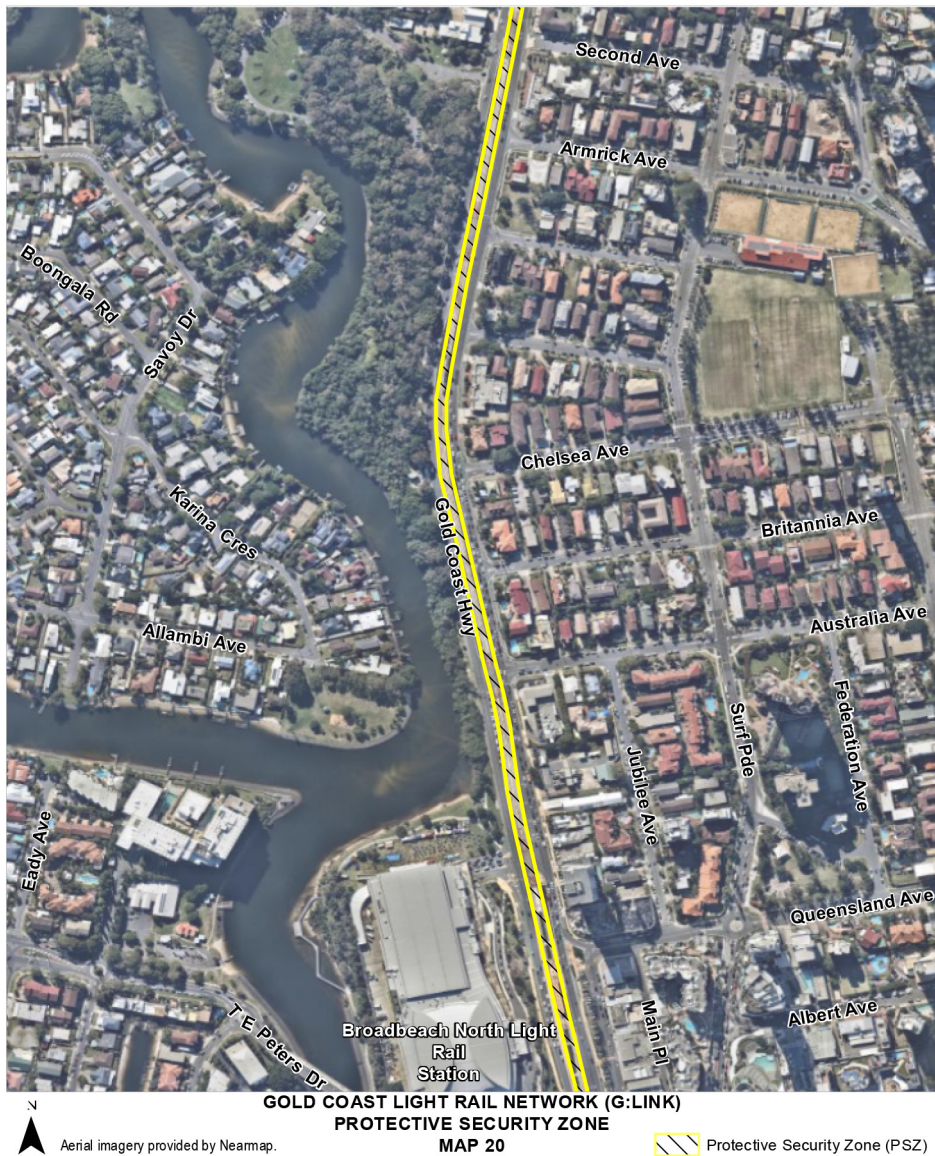


[s 5]





[s 5]





[s 5]

Part 26

Helensvale Transport Hub



Aerial imagery provided by Nearmap.

6 Amendment of sch 10 (Dictionary)

- (1) Schedule 10, definitions *Gold Coast Light Rail Network (G:Link)*, *Gold Coast Train Line—Heavy Rail Network*, *light rail*, *light rail transport infrastructure*, *rail transport infrastructure* and *railway*—

omit.

- (2) Schedule 10—

insert—

Gold Coast Light Rail Network (G:Link) means the light rail transport infrastructure associated with the light rail starting at the Helensvale Light Rail Station and ending at the Broadbeach South Light Rail Station.

Gold Coast Train Line—Heavy Rail Network—

- (a) means the rail transport infrastructure associated with the railway starting at Roma Street Rail and Bus Station and ending at Varsity Lakes Rail Station; and

- (b) includes the following—

- (i) Roma Street Rail and Bus Station;
- (ii) South Brisbane Rail Station;
- (iii) South Bank Rail and Bus Station;
- (iv) Park Road Rail and Bus Station;
- (v) Dutton Park Rail Station;
- (vi) Fairfield Rail Station;
- (vii) Yeronga Rail Station;
- (viii) Yeerongpilly Rail Station;
- (ix) Moorooka Rail Station;
- (x) Rocklea Rail Station;
- (xi) Salisbury Rail Station;
- (xii) Coopers Plains Rail Station;

- (xiii)Banoon Rail Station;
- (xiv)Sunnybank Rail Station;
- (xv) Altandi Rail Station;
- (xvi)Runcorn Rail Station;
- (xvii)Fruitgrove Rail Station;
- (xviii)Kuraby Rail Station;
- (xix)Trinder Park Rail Station;
- (xx) Woodridge Rail Station;
- (xxi)Kingston Rail Station;
- (xxii)Loganlea Rail Station;
- (xxiii)Bethania Rail Station;
- (xxiv)Edens Landing Rail Station;
- (xxv)Holmview Rail Station;
- (xxvi)Beenleigh Rail Station;
- (xxvii)Ormeau Rail Station;
- (xxviii)Coomera Rail Station;
- (xxix)Helensvale Rail Station;
- (xxx)Nerang Rail Station;
- (xxxi)Robina Rail Station;
- (xxxii)Varsity Lakes Rail Station.

light rail see the *Transport Infrastructure Act 1994*, schedule 6.

light rail transport infrastructure see the *Transport Infrastructure Act 1994*, schedule 6.

rail transport infrastructure see the *Transport Infrastructure Act 1994*, schedule 6.

railway see the *Transport Infrastructure Act 1994*, schedule 6.

ENDNOTES

- 1 Made by the Governor in Council on 28 September 2017.
- 2 Notified on the Queensland legislation website on 29 September 2017.
- 3 The administering agency is the Queensland Police Service.

© State of Queensland 2017