



Queensland

# **North Stradbroke Island Protection and Sustainability (Renewal of Mining Leases) Amendment Bill 2015**





Queensland

# North Stradbroke Island Protection and Sustainability (Renewal of Mining Leases) Amendment Bill 2015

## Contents

---

		Page
1	Short title .....	4
2	Act amended .....	4
3	Amendment of s 2 (Object of Act) .....	4
4	Amendment of s 11E (Provisions about particular leases if renewed) .....	4
5	Insertion of new sch 2B .....	5
	Schedule 2B      Restricted mine path for mining leases 1105, 1117 and 1120	



**2015**

---

**A Bill**

for

***An Act to amend the North Stradbroke Island Protection and Sustainability Act 2011 for particular purposes***

---

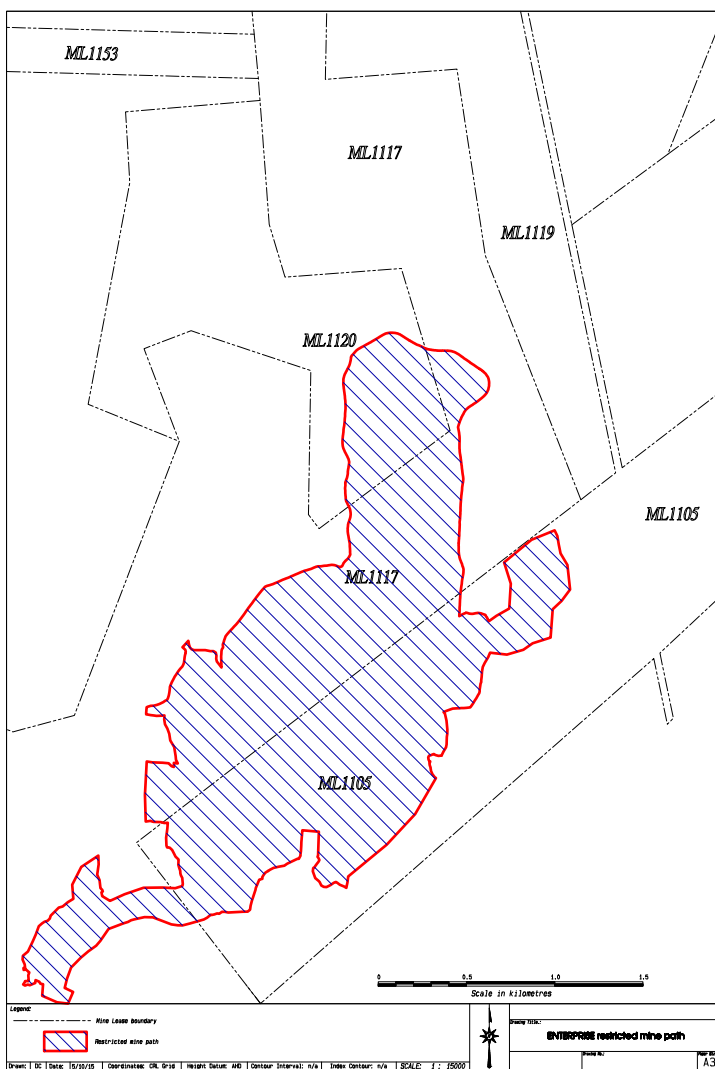
<b>The Parliament of Queensland enacts—</b>	1	
<b>Clause 1</b>	<b>Short title</b>	2
	This Act may be cited as the <i>North Stradbroke Island Protection and Sustainability (Renewal of Mining Leases) Amendment Act 2015</i> .	3 4 5
<b>Clause 2</b>	<b>Act amended</b>	6
	This Act amends the <i>North Stradbroke Island Protection and Sustainability Act 2011</i> .	7 8
<b>Clause 3</b>	<b>Amendment of s 2 (Object of Act)</b>	9
	Section 2, from ‘2035’ to ‘2040’—	10
	<i>omit, insert—</i>	11
	2024 (but allow for rehabilitation of land in the region to happen up until the end of 2029)	12 13
<b>Clause 4</b>	<b>Amendment of s 11E (Provisions about particular leases if renewed)</b>	14 15
	(1) Section 11E(2)(a) and (b)—	16
	<i>omit, insert—</i>	17
	(a) the winning of a mineral from the place where it occurs may only be conducted within the restricted mine path for the lease;	18 19 20
	(b) if, because of the renewal, the lease ends after 31 December 2024—	21 22
	(i) after 31 December 2024, the winning of a mineral from the place where it occurs in the area of the lease is not an authorised activity for the lease; and	23 24 25 26

	(ii) the mining lease ends at the end of 31 December 2029 and can not be renewed beyond that date.	1 2 3
(2)	Section 11E(3)— <i>insert—</i>	4 5
	<i>restricted mine path</i> , for mining lease 1105, 1117 or 1120, means the area of the lease shown cross-hatched on the map in schedule 2B.	6 7 8
<b>Clause 5</b>	<b>Insertion of new sch 2B</b>	9
	After schedule 2A—	10
	<i>insert—</i>	11

[s 5]

**Schedule 2B**      **Restricted mine path**      1  
**for mining leases**      2  
**1105, 1117 and 1120**      3

section 11E(3), definition *restricted mine path*      4





Authorised by the Parliamentary Counsel